

EVP

Stainless Steel Vertical Multistage Pump

Application

- Water supply: Pressure boosting for main pipes and high-rise buildings
- Industrial pressure boosting: Water system, cleaning system, high pressure washing system and firefighting system
- Pressure boosting for pressure tank, sprinkling irrigation and trichling irrigation
- Air conditioner, cooling system and industrial cleaning

Features

- Applicable for a wide scope of different temperatures, flow rates and pressure ranges
- Water inlet and outlet can be rotated for proper assembly in accordance with installation requirement
- Easy installation and maintenance
- Advanced hydraulic model design, featuring stable operation and high efficiency
- Cast iron water inlet and outlet with special anti-rust treatment
- High-strength engineering plastic flow passage components
- Reliable stainless steel welded shaft

Working Conditions

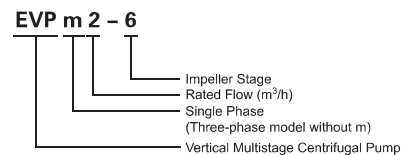
- Liquid temperature: +5°C ~ 60°C
- Maximum ambient temperature: +40°C
- Maximum pressure: 10 bar
- Altitude: up to 1000 m

Model Selection Instructions

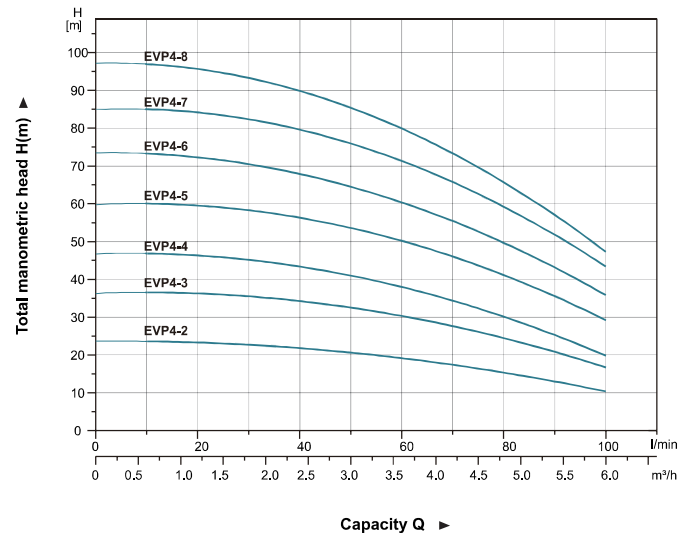
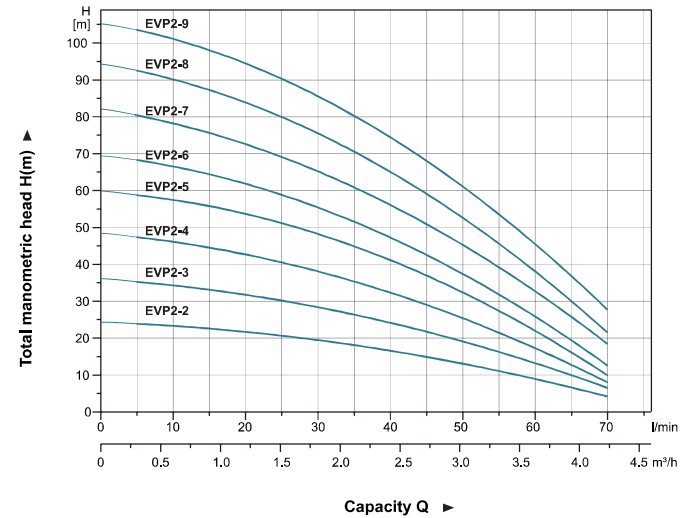
- Voltage and frequency: Single-phase 220-240V/50Hz;
Three-phase 380-415V/50Hz.

Please choose the pump with appropriate flow rate and head to meet your actual demand.

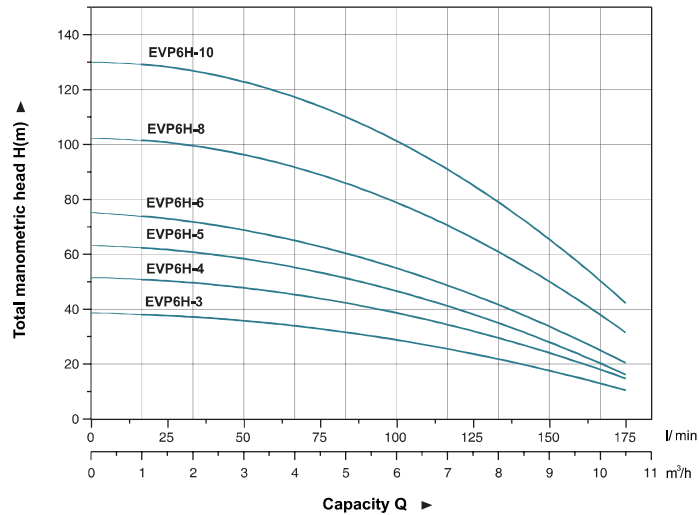
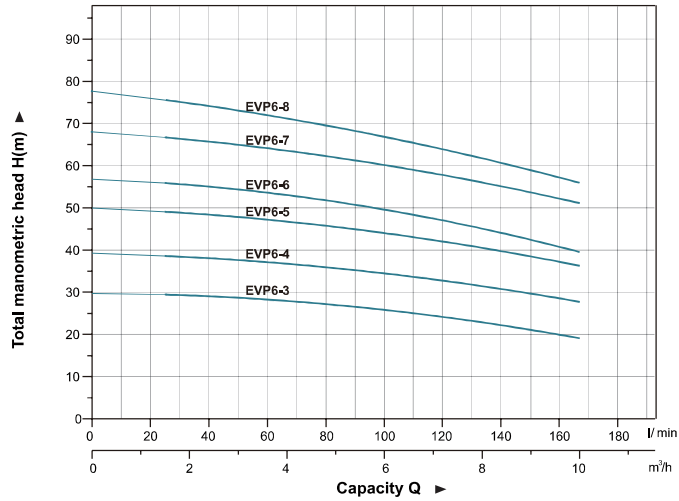
Identification Codes



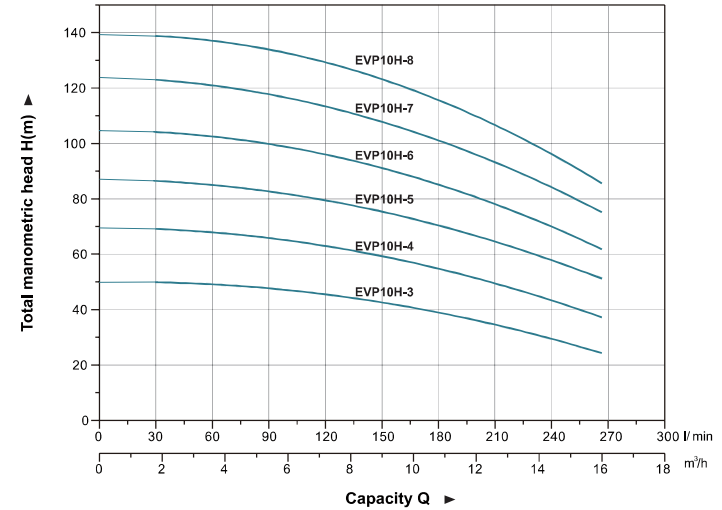
Hydraulic Performance Curves



Hydraulic Performance Curves



Hydraulic Performance Curves



Technical Data

Model		Power		Q (m³/h)	0	1	2	3	4
Single-phase	Three-phase	kW	HP	Q (l/min)	0	16.7	33.3	50	66.7
EVPm2-2	EVP2-2	0,37	0,5	H (m)	24	23	18	13	6
EVPm2-3	EVP2-3	0,55	0,75		36	33	26	20	9
EVPm2-4	EVP2-4	0,75	1,0		48	45	35	26	11
EVPm2-5	EVP2-5	1,0	1,33		59	57	44	33	15
EVPm2-6	EVP2-6	1,0	1,33		69	65	52	37	18
EVPm2-7	EVP2-7	1,1	1,5		82	75	62	45	25
EVPm2-8	EVP2-8	1,5	2,0		94	87	72	52	28
EVPm2-9	EVP2-9	1,5	2,0		105	98	82	60	35

Model		Power		Q (m³/h)	0	1	2	3	4	5	6
Single-phase	Three-phase	kW	HP	Q (l/min)	0	16.7	33.3	50	66.7	83.3	100
EVPm4-2	EVP4-2	0,55	0,75	H (m)	24	23	22	21	18	15	10
EVPm4-3	EVP4-3	0,75	1,0		37	36	34	33	29	24	16
EVPm4-4	EVP4-4	1,0	1,33		47	46	45	41	36	28	20
EVPm4-5	EVP4-5	1,5	2,0		61	58	57	55	48	39	29
EVPm4-6	EVP4-6	1,5	2,0		74	72	69	66	57	47	36
—	EVP4-7	2,2	3,0		86	83	81	77	68	57	43
—	EVP4-8	2,2	3,0		98	95	92	86	76	63	47

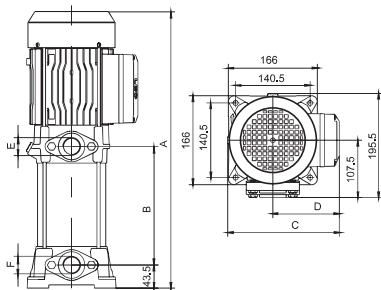
Technical Data

Model		Power (P2)		Q (m ³ /h)	Q (l/min)										
Single-phase	Three-phase	kW	HP		0	1	2	3	4	5	6	7	8	9	10
EVPm6-3	EVP6-3	1.1	1.5	H (m)	30	29.5	29	28.5	28	27	26	24.5	23	21	19
EVPm6-4	EVP6-4	1.5	2.0		40	38.5	37.5	37.3	37	36	34	33.5	32	30	27
—	EVP6-5	2.2	3.0		50	49	48.5	48.3	48	45	43	42	41	39	36
—	EVP6-6	2.2	3.0		58	56	54	53.5	53	52	51	48	45	41	40
—	EVP6-7	3.0	4.0		68	67	66.5	65	63.5	62	60	58	56	54	51
—	EVP6-8	3.0	4.0		78	75	73	72	71	70	68	65	62	59	55

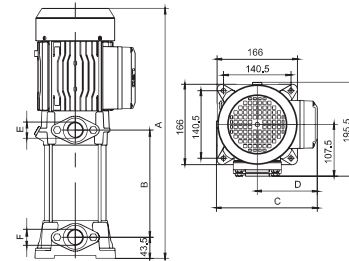
Model		Power (P2)		Q (m ³ /h)	Q (l/min)									
Single-phase	Three-phase	kW	HP		0	1	2	3	4.5	6	7.5	9	10.5	
EVPm6H-3	EVP6H-3	0.75	1	H (m)	39	38	37	35	33	29	24	18	10	
EVPm6H-4	EVP6H-4	1.1	1.5		52	51	49	47	44	39	32	25	14	
EVPm6H-5	EVP6H-5	1.5	2		64	62	60	58	54	47	38	28	16	
—	EVP6H-6	2.2	3		76	74	71	68	63	56	45	34	20	
—	EVP6H-8	3.0	4		103	100	97	95	90	80	66	50	31	
—	EVP6H-10	4.0	5.5		130	127	124	121	114	103	86	66	41	

Model		Power (P2)		Q (m ³ /h)	Q (l/min)									
Three-phase	kW	HP	0		2	4	6	8	10	12	14	16		
EVP10H-3	3.0	4.0	H (m)	52	51	50	48	45	40	30	23	12		
EVP10H-4	4.0	5.4		69	68	67	65	61	55	47	37	26		
EVP10H-5	5.5	7.5		86	84	82	79	75	68	60	50	40		
EVP10H-6	5.5	7.5		103	101	98	95	90	84	76	67	57		
EVP10H-7	7.5	10		120	118	116	113	108	101	91	80	70		
EVP10H-8	7.5	10		137	135	132	128	122	115	105	94	81		

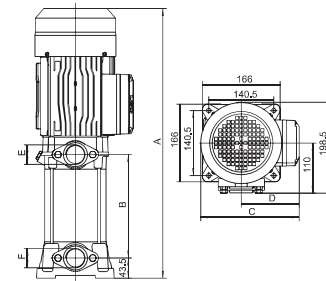
Dimension



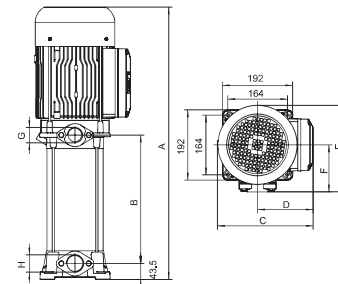
Model		Power (P2)		A	B	C	D	E	F
Single-phase	Three-phase	kW							
EVPm2-2	EVP2-2	0.37	382	120	193	110	G1	G1	
EVPm2-3	EVP2-3	0.55	406	144	193	110	G1	G1	
EVPm2-4	EVP2-4	0.75	430	168	193	110	G1	G1	
EVPm2-5	EVP2-5	1.0	454	192	193	110	G1	G1	
EVPm2-6	EVP2-6	1.0	478	216	193	110	G1	G1	
EVPm2-7	EVP2-7	1.1	545	247.5	210	125	G1	G1	
EVPm2-8	EVP2-8	1.5	569	271.5	210	125	G1	G1	
EVPm2-9	EVP2-9	1.5	593	295.5	210	125	G1	G1	



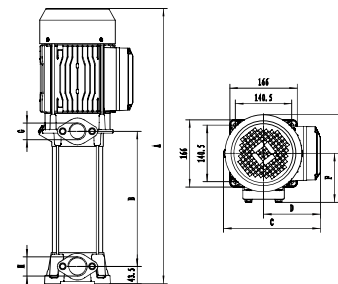
Model		Power (P2)		A	B	C	D	E	F
Single-phase	Three-phase	kW							
EVPm4-2	EVP4-2	0.55	382	120	193	110	G1	G1	
EVPm4-3	EVP4-3	0.75	406	144	193	110	G1	G1	
EVPm4-4	EVP4-4	1.0	430	168	210	125	G1	G1	
EVPm4-5	EVP4-5	1.5	497	199.5	210	125	G1	G1	
EVPm4-6	EVP4-6	1.5	521	223.5	210	125	G1	G1	
—	EVP4-7	2.2	545	247.5	210	125	G1	G1	
—	EVP4-8	2.2	569	271.5	210	125	G1	G1	



Model		Power (P2)		A	B	C	D	E	F
Single-phase	Three-phase	kW							
EVPm6-3	EVP6-3	1.1	487	190	210	125	G1½	G1½	
EVPm6-4	EVP6-4	1.5	524	227	210	125	G1½	G1½	
—	EVP6-5	2.2	561	264	210	125	G1½	G1½	
—	EVP6-6	2.2	598	301	210	125	G1½	G1½	
—	EVP6-7	3.0	685	338	221	134	G1½	G1½	
—	EVP6-8	3.0	722	375	221	134	G1½	G1½	



Model		Power (P2)		A	B	C	D	E	F	G	H
Three-phase	kW										
EVP10H-3	3.0	554.5	187	240	141	227.5	127.5	G1½	G1½		
EVP10H-4	4.0	577.5	220	240	141	227.5	127.5	G1½	G1½		
EVP10H-5	5.5	647	253	262	152	237.5	128.5	G1½	G1½		
EVP10H-6	5.5	680	286	262	152	237.5	128.5	G1½	G1½		
EVP10H-7	7.5	713	319	262	152	237.5	128.5	G1½	G1½		
EVP10H-8	7.5	746	352	262	152	237.5	128.5	G1½	G1½		



Model		P2(kW)		A	B	C	D	E	F	G	H
Single-phase	Three-phase										
EVPm6H-3	EVP6H-3	0.75	457	158.5	210	125	202	114.5	G1½	G1½	
EVPm6H-4	EVP6H-4	1.1	483.5	185	210	125	202	114.5	G1½	G1½	
EVPm6H-5	EVP6H-5	1.5	510	211.5	210	125	202	114.5	G1½	G1½	
—	EVP6H-6	2.2	536.5	238	210	125	202	114.5	G1½	G1½	
—	EVP6H-8	3.0	655	297.5	240	141	218	121.5	G1½	G1½	
—	EVP6H-10	4.0	708	350.5	240	141	218	121.5	G1½	G1½	