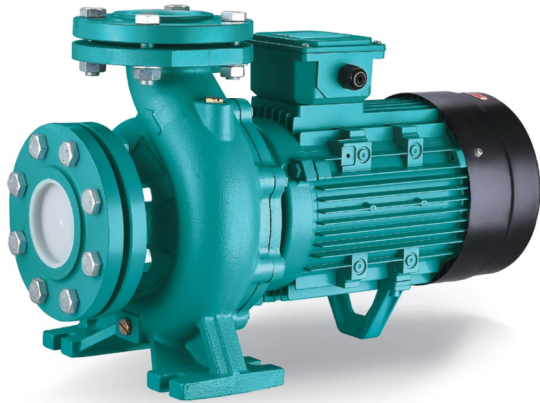


XST (<7.5 kW) Standardized centrifugal pump in cast iron (<7.5 kW)



Application

- Transfer of clear water or other liquids chemically and physically comparable to water
- Water supply and irrigation
- Water circulation in air conditioning systems

Pompe

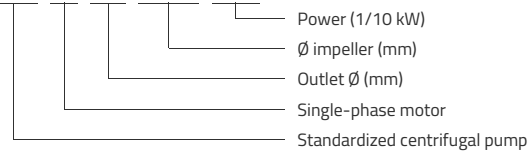
- Single-stage centrifugal pump
- Flow up to 220 m³/h
- HMT up to 95 m
- Liquid temperature between -10°C and 85°C
- Maximum operating pressure of 12 bars
- Stainless steel impeller AISI304 (models XST32, XST40-200) or HT200
- Mechanical seal in accordance with DIN 24960
- Standardized centrifugal pumps according to EN 733

Moteur

- Insulation class: F
- Protection class: IP54
- Performances in accordance with CEI 2-3 (IEC 34.1)
- Maximum ambient temperature: +40°C

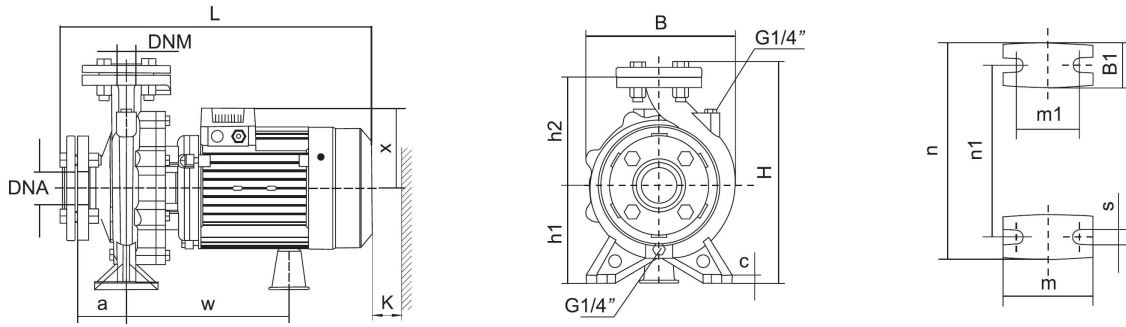
Identification codes

XST m 32 -125 /11



Technical data

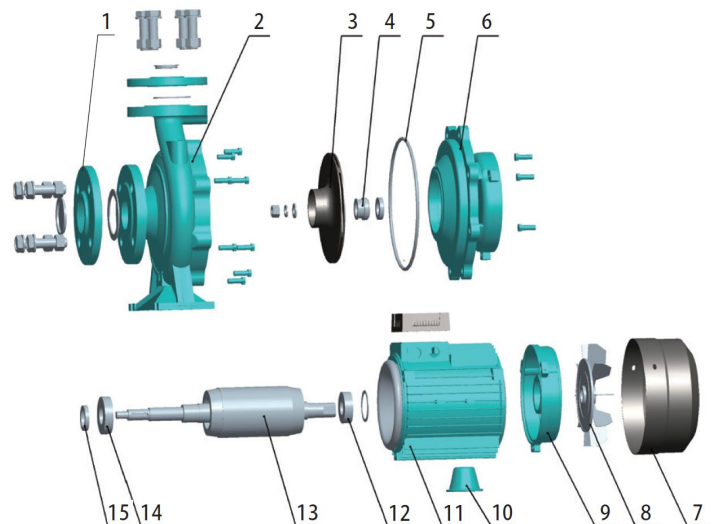
MODEL	kW	Q (m ³ /h)		0	6	9	15	18	24	27	36	42	48	54	72	84	90	108	120
		Q (l/min)	0	100	150	250	300	400	450	600	700	800	900	1200	1400	1500	1800	2000	
XSTm32-125/7	0.75		17.5	16.7	15	12	9												
XST32-125/7	0.75		17.5	16.7	15	12	9												
XSTm32-125/11	1.1		22	21	20.2	17	15	9											
XST32-125/11	1.1		22	21	20.2	17	15	9											
XSTm32-160/15	1.5		24	23.7	22.5	19.5	16.2												
XST32-160/15	1.5		24	23.7	22.5	19.5	16.2												
XSTm32-160/22	2.2		31	29.6	29	25.5	22.5	15											
XST32-160/22	2.2		31	29.6	29	25.5	22.5	15											
XSTm32-160/30	3		34.5	33.5	33	29	26.5	20	16.5										
XST32-160/30	3		34.5	33.5	33	29	26.5	20	16.5										
XST32-200/30	3		43.2	42	40.5	35.2	32.2	24.6	19.8										
XST32-200/40	4		52	50.5	50	45	41.9	35	30.3										
XST32-250/55	5.5		79	74.7	71.8	63	56	37.5											
XST32-250/75	7.5		95	92	89	82	75	57.8											
XSTm40-125/11	1.1		14.7					13	11.5	10.1									
XST40-125/11	1.1		14.7					13	11.5	10.1									
XSTm40-125/15	1.5		18.1					17	15	13.9									
XST40-125/15	1.5		18.1					17	15	13.9									
XSTm40-125/22	2.2		24.5					23.2	21.5	20.2	16	12							
XST40-125/22	2.2		24.5					23.2	21.5	20.2	16	12							
XST40-160/30	3		31.8					29	27.5	26.3	21.5	17.5							
XST40-160/40	4		38					36	34	33	28.5	25	20.1						
XST40-200/55	5.5		44					42	40	38	32	27							
XST40-200/75	7.5		55					52	49	48	42	37	32						
XSTm50-125/22	2.2		17								15.4	14	12.8	11.5					
XST50-125/22	2.2		17								15.4	14	12.8	11.5					
XST50-125/30	3		20								18.8	18	17	15.6					
XST50-125/40	4		24								23.1	22.6	21.5	20.3	15.8				
XST50-160/55	5.5		32								30.6	30	28	26.6	20.5				
XST50-160/75	7.5		40								38	37	36	34.4	29				
XST65-125/40	4		19										17.3	16.8	14.5	13	11.8		
XST65-125/55	5.5		23										21.3	20.9	19	17.5	16.7	13.7	
XST65-125/75	7.5		27										26	25.6	24.5	23	22.5	20	18



MODEL	DNM	DNA	a	w	x	h2	B1	c	h1	m	m1	n	n1	s	B	H	L	K
XSTm32-125/7	32	50	80	223	113	140	48	12	112	100	70	190	140	15	192	281	427	85
XST32-125/7	32	50	80	223	113	140	48	12	112	100	70	190	140	15	192	281	427	85
XSTm32-125/11	32	50	80	223	113	140	48	12	112	100	70	190	140	15	192	281	427	85
XST32-125/11	32	50	80	223	113	140	48	12	112	100	70	190	140	15	192	281	427	85
XSTm32-160/15	32	50	80	231	123	160	50	16	132	100	70	240	190	14	240	321	430	95
XST32-160/15	32	50	80	231	123	160	50	16	132	100	70	240	190	14	240	321	430	95
XSTm32-160/22	32	50	80	231	123	160	50	16	132	100	70	240	190	14	240	321	430	95
XST32-160/22	32	50	80	231	123	160	50	16	132	100	70	240	190	14	240	321	430	95
XSTm32-160/30	32	50	80	266	141	160	50	16	132	100	70	240	190	14	240	321	496	95
XST32-160/30	32	50	80	266	141	160	50	16	132	100	70	240	190	14	240	321	496	95
XST32-200/30	32	50	80	258	127	180	48	12	160	100	70	240	190	15	248	369	490	95
XST32-200/40	32	50	80	258	127	180	48	12	160	100	70	240	190	15	248	369	490	95
XST32-250/55	32	50	155	264	180	198	60	15	160	100	70	272	212	15	308	386	610	60
XST32-250/75	32	50	155	264	180	198	60	15	160	100	70	272	212	15	308	386	640	60
XSTm40-125/11	40	65	80	255	127	140	45	12	112	100	70	210	160	15	218	282	489	95
XST40-125/11	40	65	80	255	127	140	45	12	112	100	70	210	160	15	218	282	489	95
XSTm40-125/15	40	65	80	255	127	140	45	12	112	100	70	210	160	15	218	282	489	95
XST40-125/15	40	65	80	255	127	140	45	12	112	100	70	210	160	15	218	282	489	95
XSTm40-125/22	40	65	80	255	127	140	45	12	112	100	70	210	160	15	218	282	489	95
XST40-125/22	40	65	80	255	127	140	45	12	112	100	70	210	160	15	218	282	489	95
XST40-160/30	40	65	80	238	127	168	48	12	132	100	70	240	190	15	249	330	494	105
XST40-160/40	40	65	80	238	127	168	48	12	132	100	70	240	190	15	249	330	494	105
XST40-200/55	40	65	100	259	180	180	50	12	160	100	70	264	212	15	275	370	553	105
XST40-200/75	40	65	100	259	180	180	50	12	160	100	70	264	212	15	275	370	583	105
XSTm50-125/22	50	65	100	262	127	160	50	12	132	100	70	240	190	15	243	322	518	110
XST50-125/22	50	65	100	262	127	160	50	12	132	100	70	240	190	15	243	322	518	110
XST50-125/30	50	65	100	262	127	160	50	12	132	100	70	240	190	15	243	322	518	110
XST50-125/40	50	65	100	262	127	160	50	12	132	100	70	240	190	15	243	322	518	110
XST50-160/55	50	65	100	262	180	180	52	12	160	100	70	264	212	15	272	370	556	110
XST50-160/75	50	65	100	262	180	180	52	12	160	100	70	264	212	15	272	370	586	110
XST65-125/40	65	80	100	265	180	180	68	14	160	125	95	280	212	15	283	372	564	110
XST65-125/55	65	80	100	265	180	180	68	14	160	125	95	280	212	15	283	372	564	110
XST65-125/75	65	80	100	265	180	180	68	14	160	125	95	280	212	15	283	372	594	110

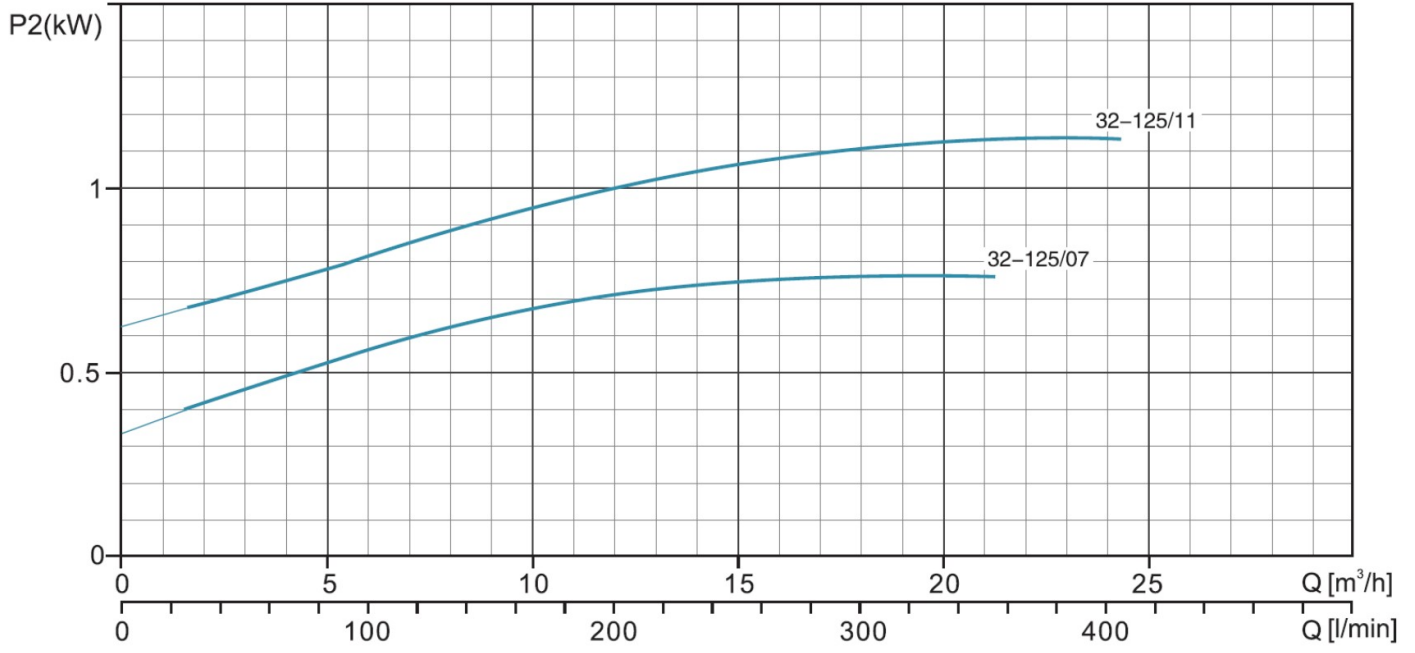
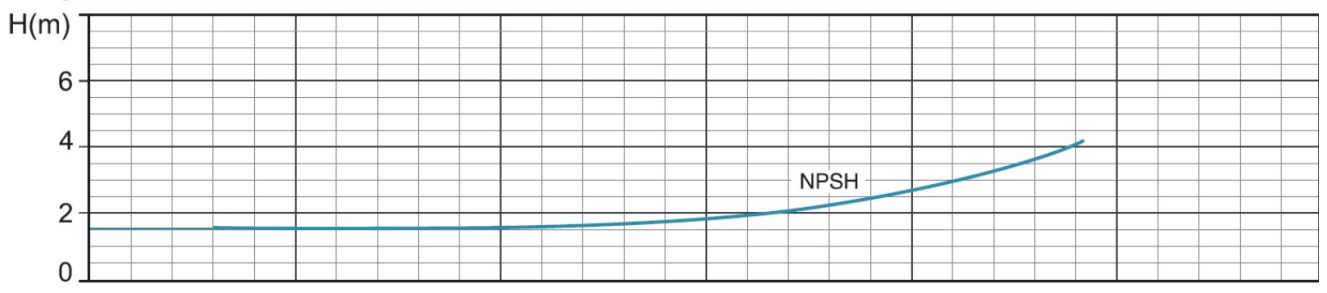
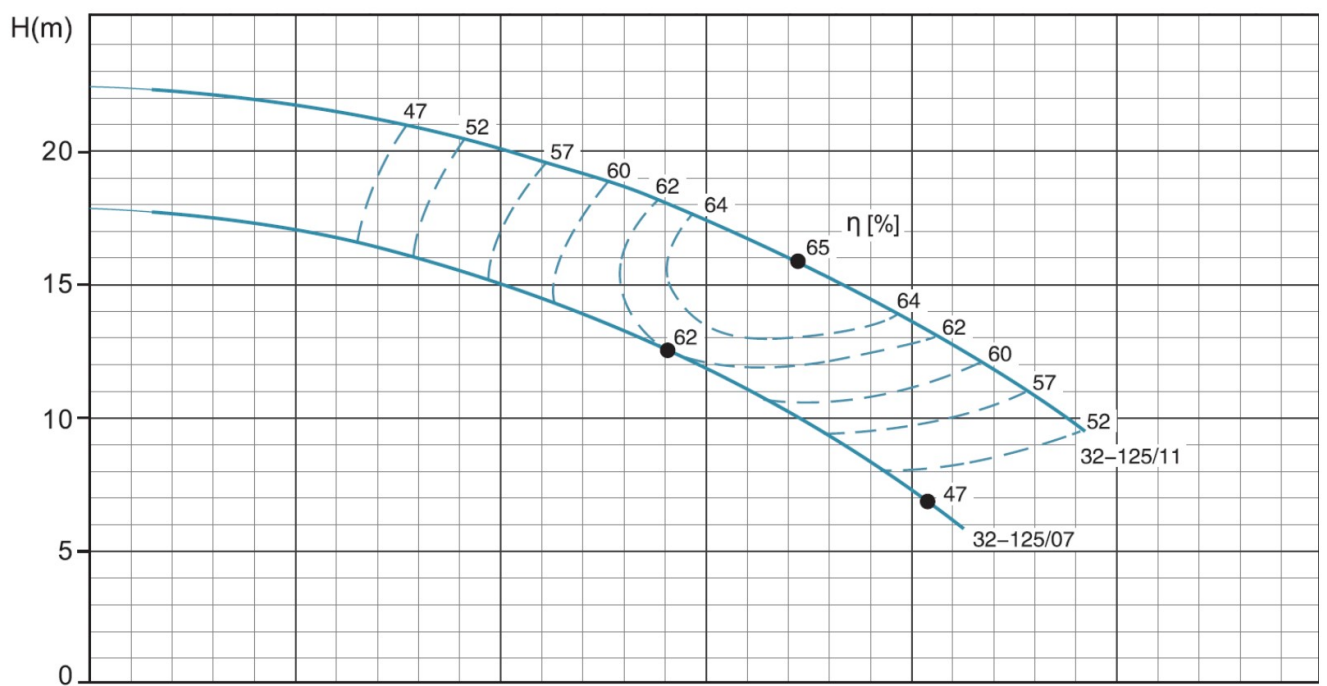
Exploded view

No.	Type	Materials
1	Backing flange	cast iron HT200
2	Pump body	cast iron HT200
3	Impeller	stainless steel AISI 304 / cast iron HT200
4	Mechanical seal	carbon / ceramic
5	O-ring	nitrile rubber (NBR)
6	Pump bottom	cast iron HT200
7	Fan cover	08F steel
8	Fan	polypropylene
9	Rear cover	cast aluminum ZL102
10	Leg	cast iron HT200
11	Stator	
12	Bearing	
13	Rotor	
14	Bearing	
15	Oil seal	

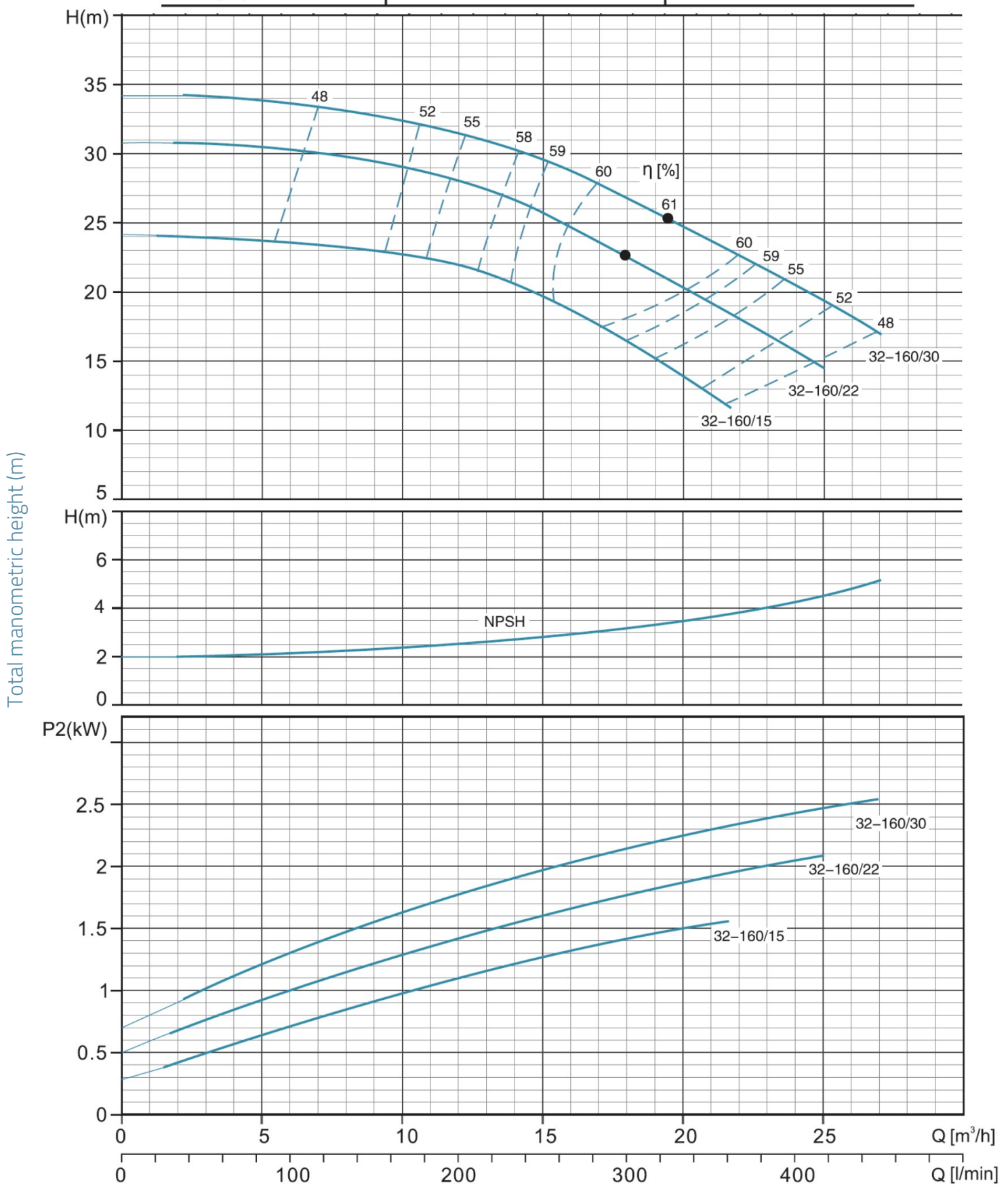


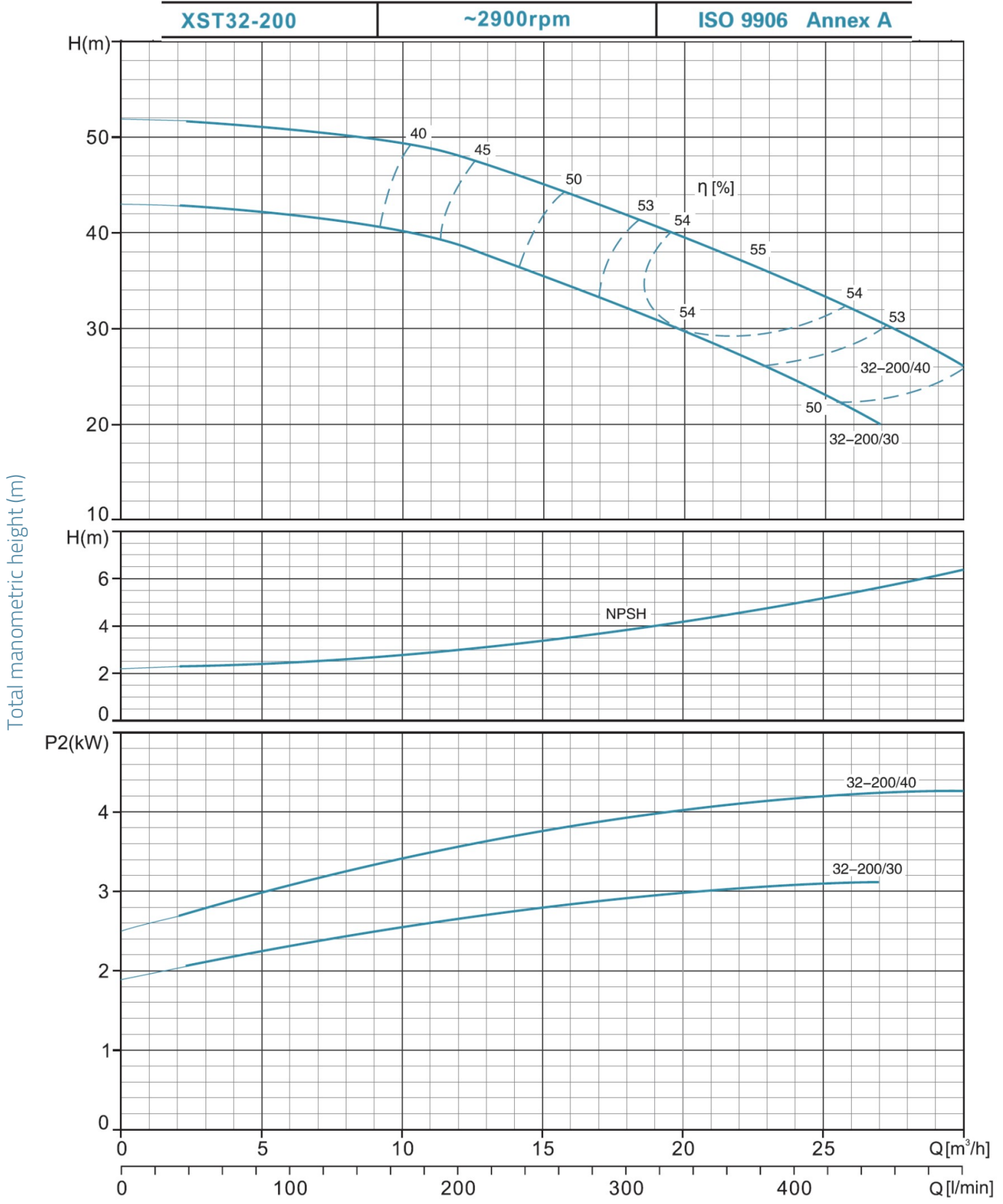
XST(m)32-125 ~2900rpm ISO 9906 Annex A

Total manometric height (m)

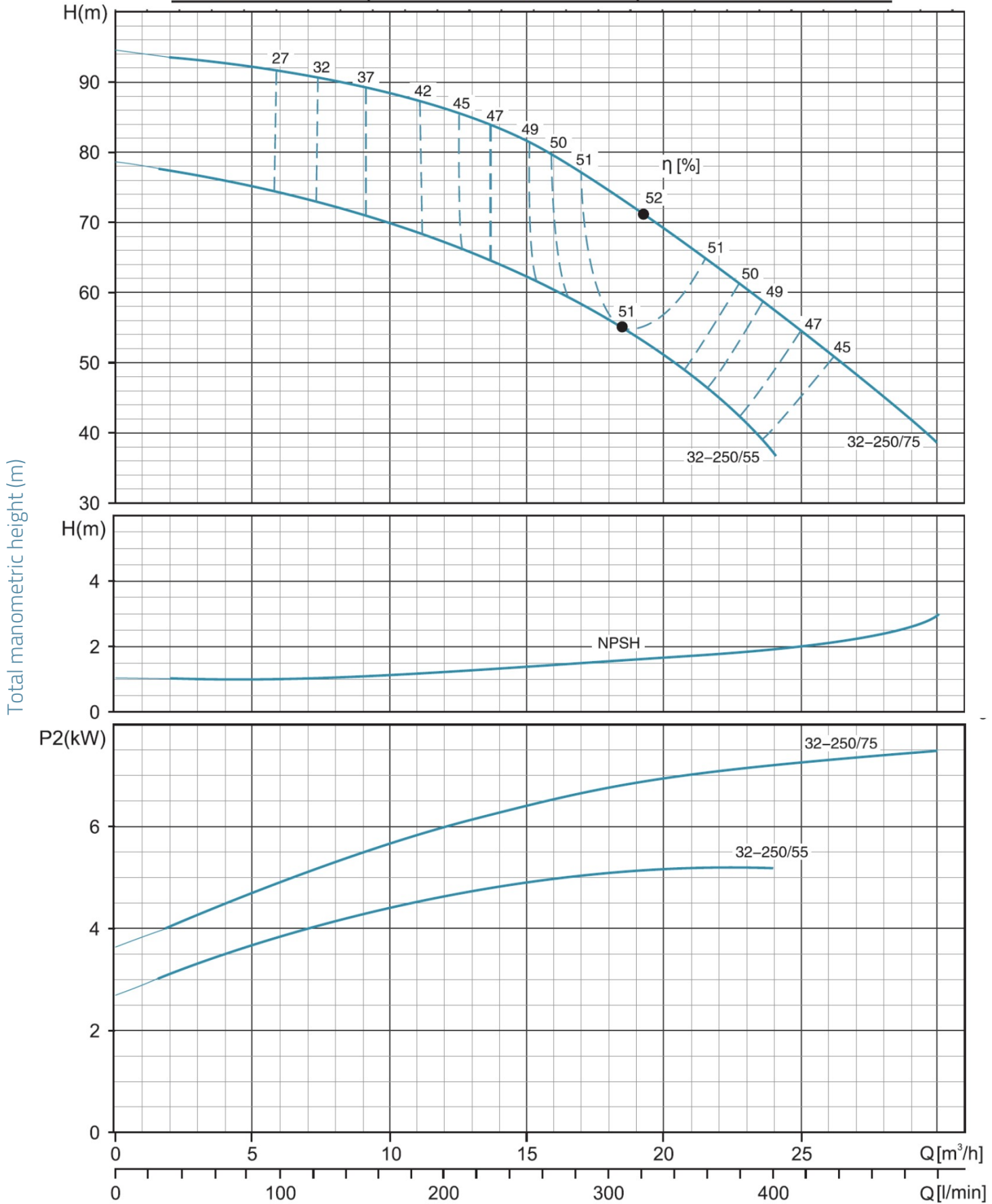


XST(m)32-160 ~2900rpm ISO 9906 Annex A

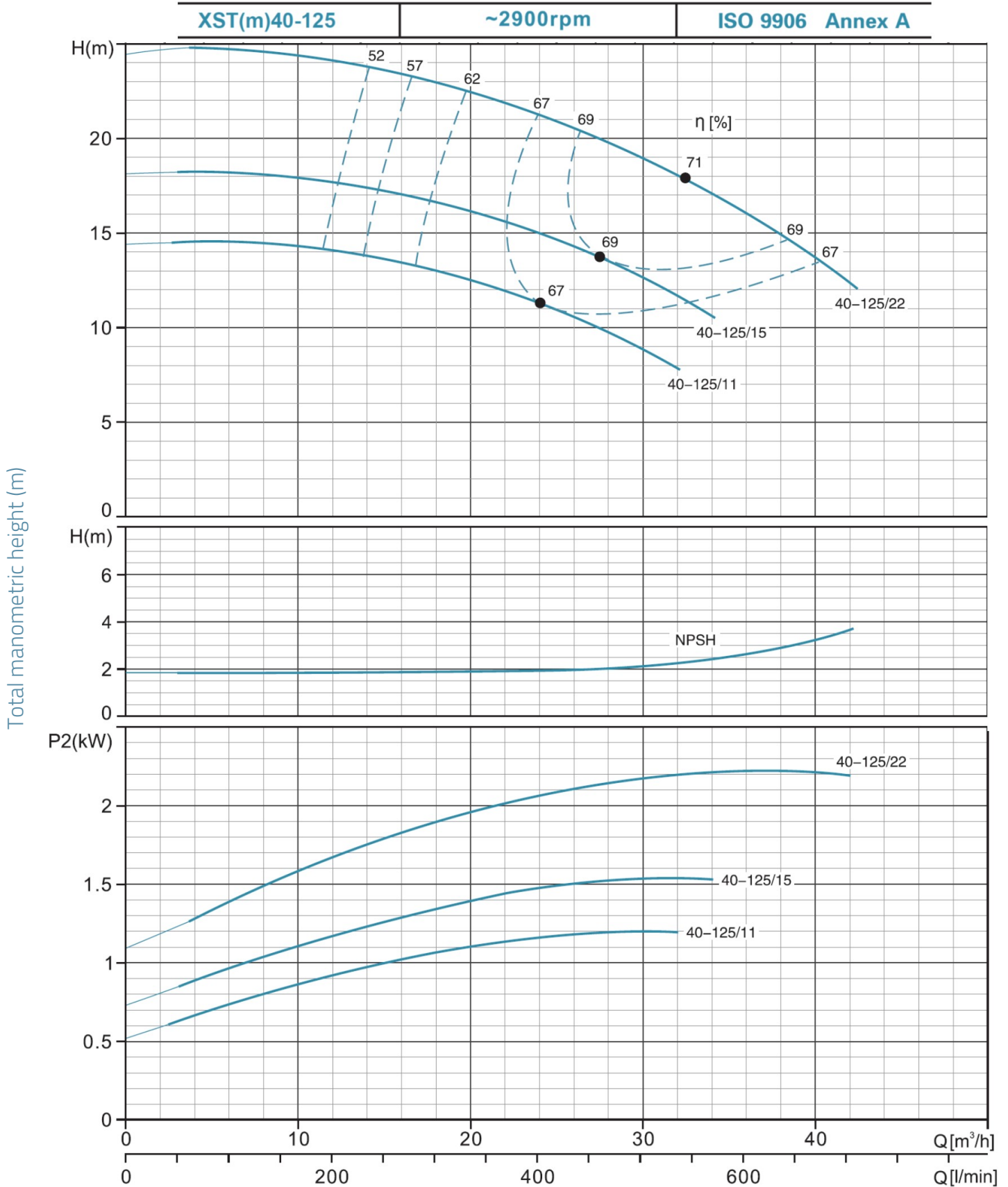


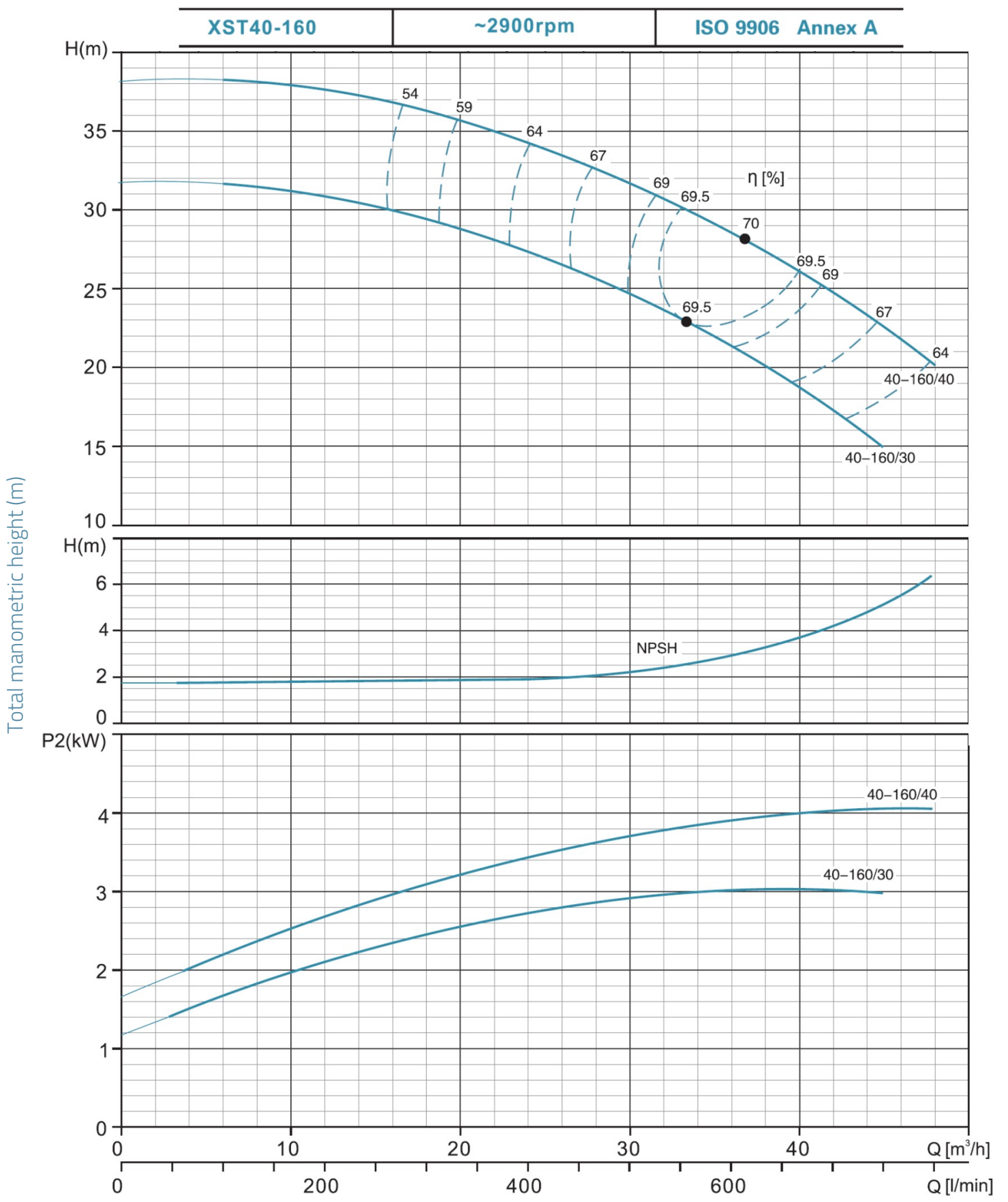


XST32-250 ~2900rpm ISO 9906 Annex A

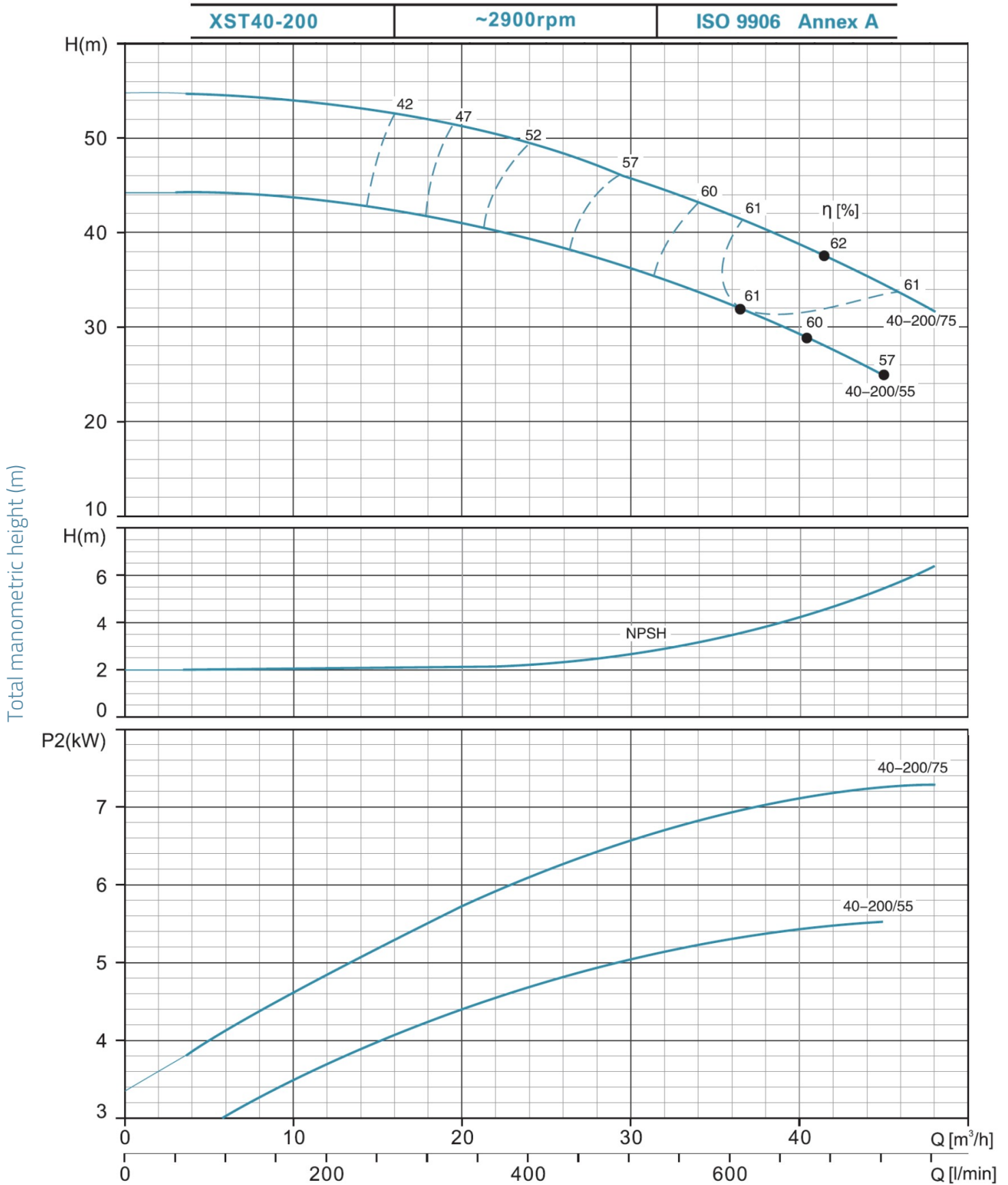


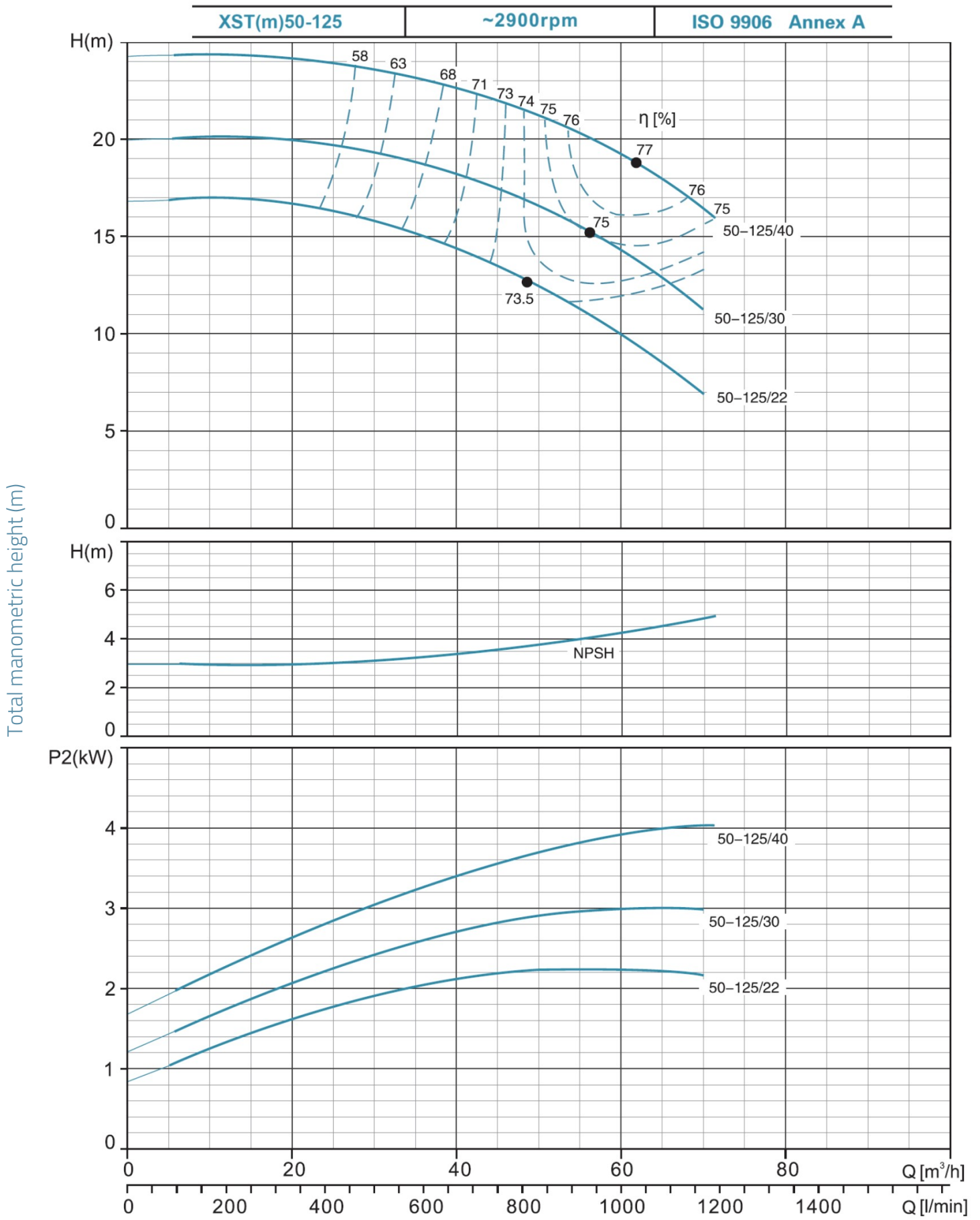
Hydraulic performance



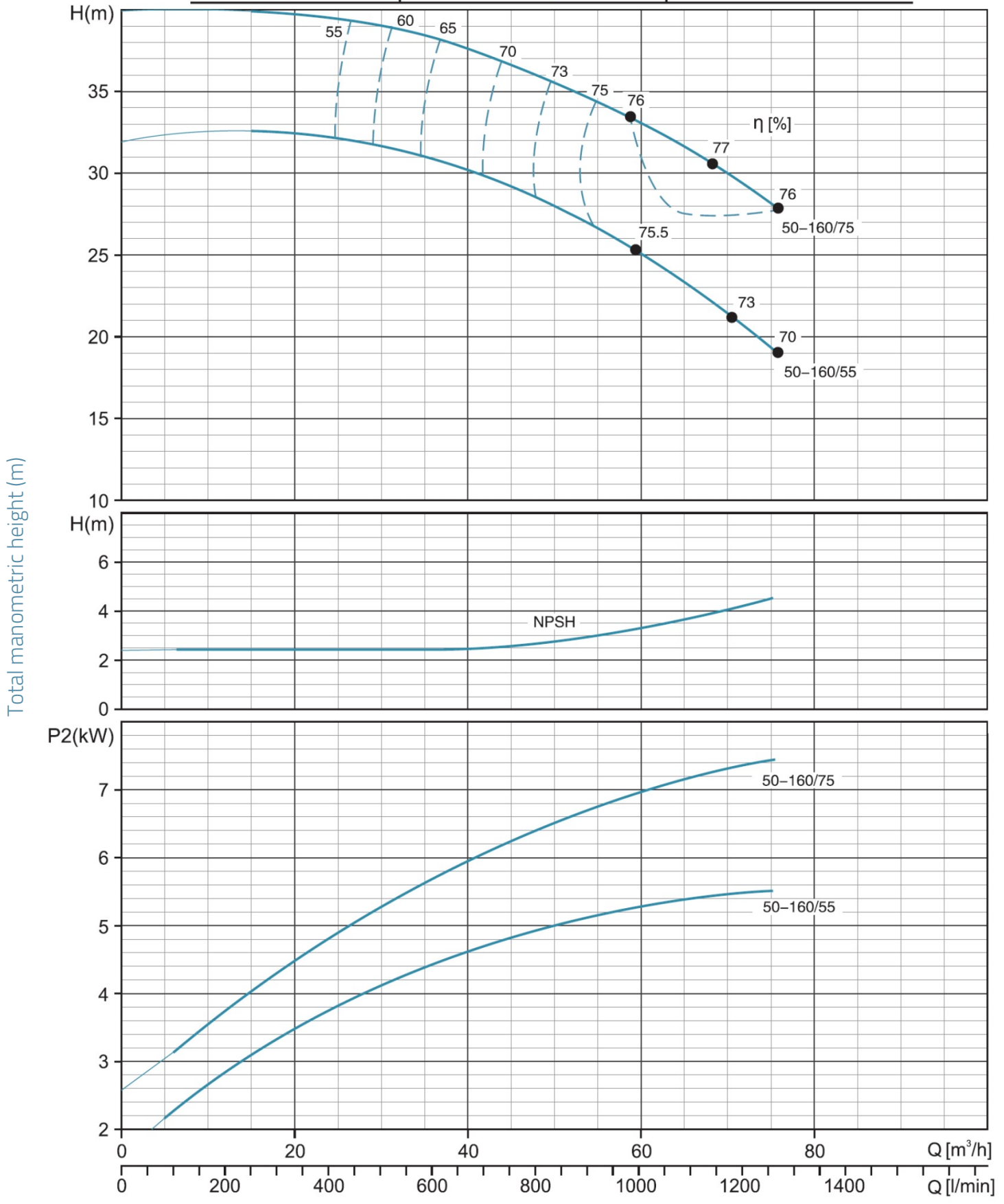


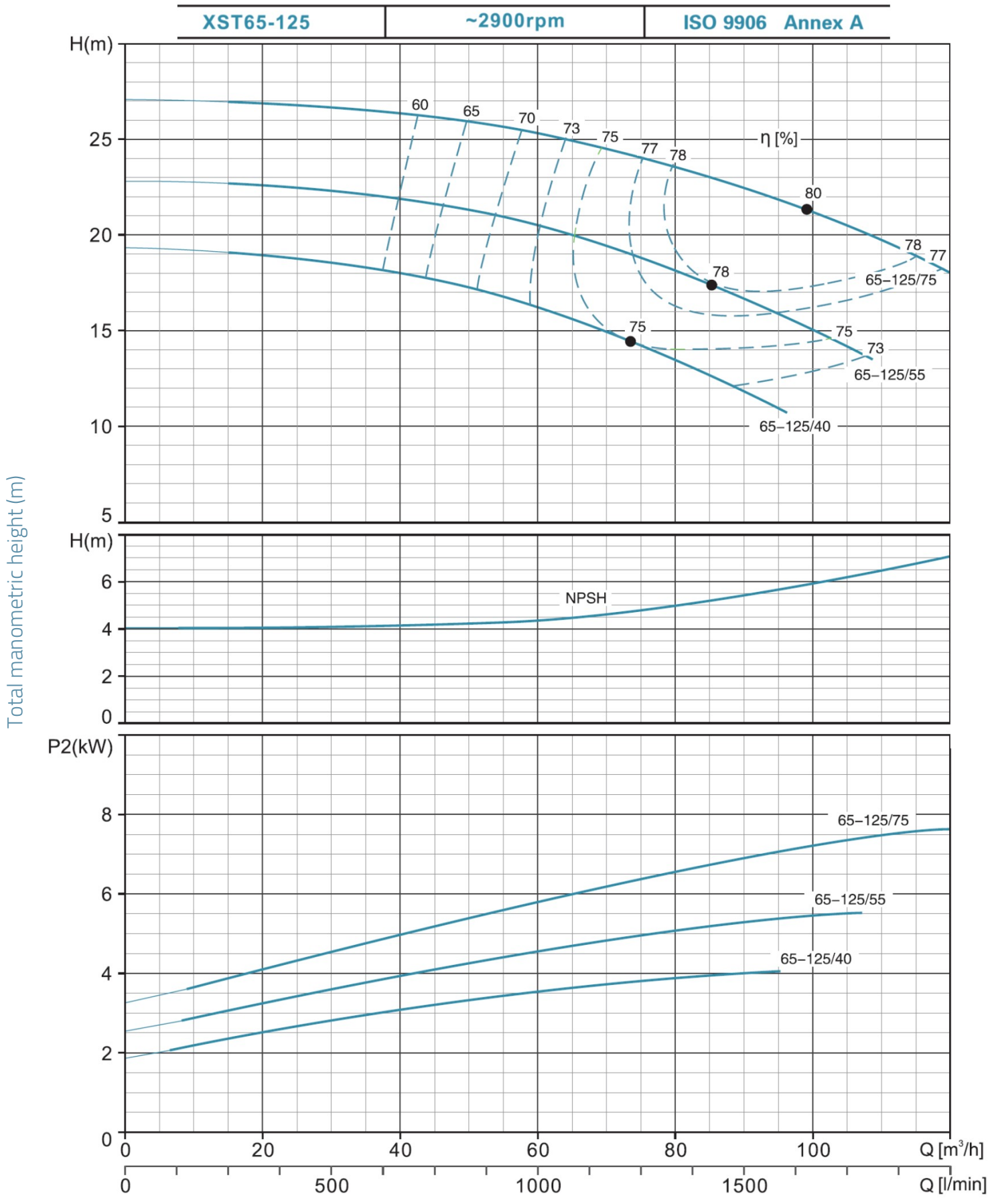
Hydraulic performance



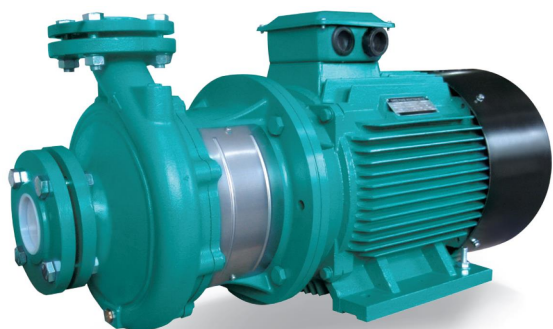


XST50-160 **~2900rpm** **ISO 9906 Annex A**





XST (>7.5 kW) Standardized centrifugal pump in cast iron (>7.5 kW)



Application

- Transfer of clear water or other liquids chemically and physically comparable to water
- Water supply and irrigation
- Water circulation in air conditioning systems

Pompe

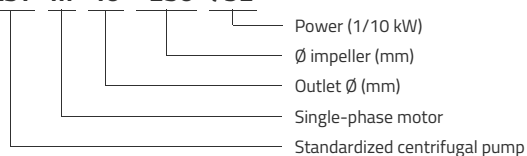
- Single-stage centrifugal pump
- Flow up to 220 m³/h
- HMT up to 95 m
- Liquid temperature between -10°C and 85°C
- Maximum operating pressure of 12 bars
- Stainless steel impeller AISI304 (XST40-250, XST50-200, XST50-250) or HT200
- Mechanical seal in accordance with DIN 24960
- Standardized centrifugal pumps according to EN 733

Moteur

- Insulation class: F
- Protection class: IP54
- Performances in accordance with CEI 2-3 (IEC 34.1)
- Maximum ambient temperature: +40°C

Identification codes

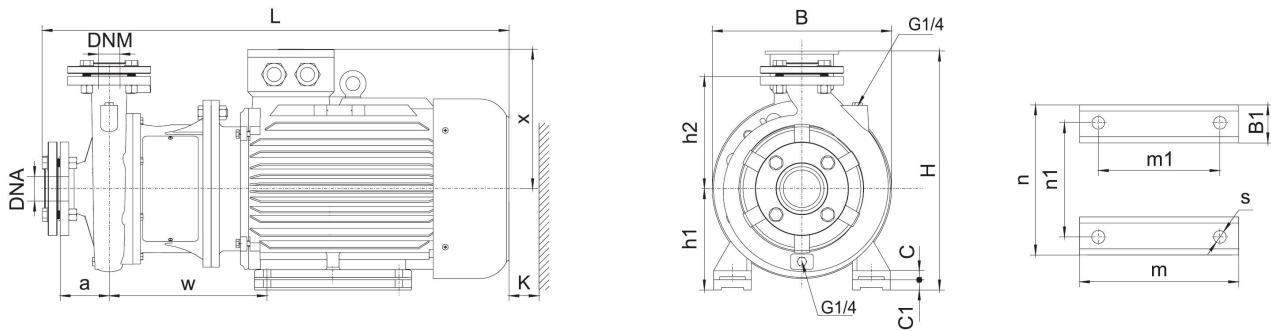
XST m 40 -250 /92



Technical data

MODEL	kW	Q (m ³ /h)		Q (l/min)																	
		0	6	9	15	18	24	27	36	42	48	54	72	84	90	108	120	138	180	210	
XST40-250/92 - 400v	11	64				59	65.5	55	49.5	45	39.8										
XST40-250/92	11	64				59	56.5	55	49.5	45	39.8										
XST40-250/110	11	72				67.5	65	63.5	57.5	52.2	47										
XST40-250/150	15	82				79	77.3	76.5	71	66	60.5										
XST50-200/92	11	50.5							46.8	45	43	40.9	32.5								
XST50-200/110	11	57.5							53.5	52	50	47.5	40								
XST50-250/150	15	68.5							64	63	61.5	59	50	41							
XST50-250/185	18.5	77							73.2	72	70	68	60.5	51.5							
XST50-250/220	22	86.3							83	81.5	80	78	70	61							
XST65-160/92	11	33										31.5	30	28	27.1	24	21.5				
XST65-160/110	11	36										34.5	33	31.5	30.8	28	25.5				
XST65-160/150	15	42										41	40	38.5	37.8	35	33				
XST65-200/150	15	45.5										46	43.5	41	39.2	33					
XST65-200/185	18.5	53										53.5	51.2	48.3	47	41.5					
XST65-200/220	22	59										59.5	57.2	54	53	47	43.5				
XST65-200K/185	18.5	41.2											42	41.2	40.6	38.2	36.5	34			
XST65-200K/220	22	48												48	47.5	46	44	41			
XST65-200K/300	30	59.5													59	58.5	58	56.2	54		
XST65-250/220	22	62											61.5	58.2	56.5	54	49	45			
XST65-250/300	30	76												75	73	70	69	64	61	54	
XST65-250/370	37	90													88	86	84	82	78	74	68
XST80-160/110	11	27														27.3	26	24.5	22.5	16	
XST80-160/150	15	32.8														32.5	31.3	30.2	28	22.1	16.7
XST80-160/185	18.5	39														38	36.8	35.7	33.8	28.8	23.5
XST80-200/220	22	48														47.5	46	43.5	41	32.5	
XST80-200/300	30	60														59.5	58	57	54.5	47	
XST80-250/370	37	71.5														70.5	67.5	65.5	61.5	49.5	38
XST80-250/450	45	82														80.5	78.5	76.5	72	62	51
XST80-250/550	55	95														93.5	91.2	89.8	86.8	77.6	68.3

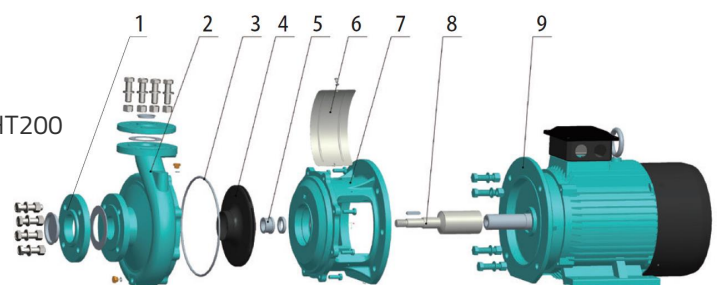
Dimensions



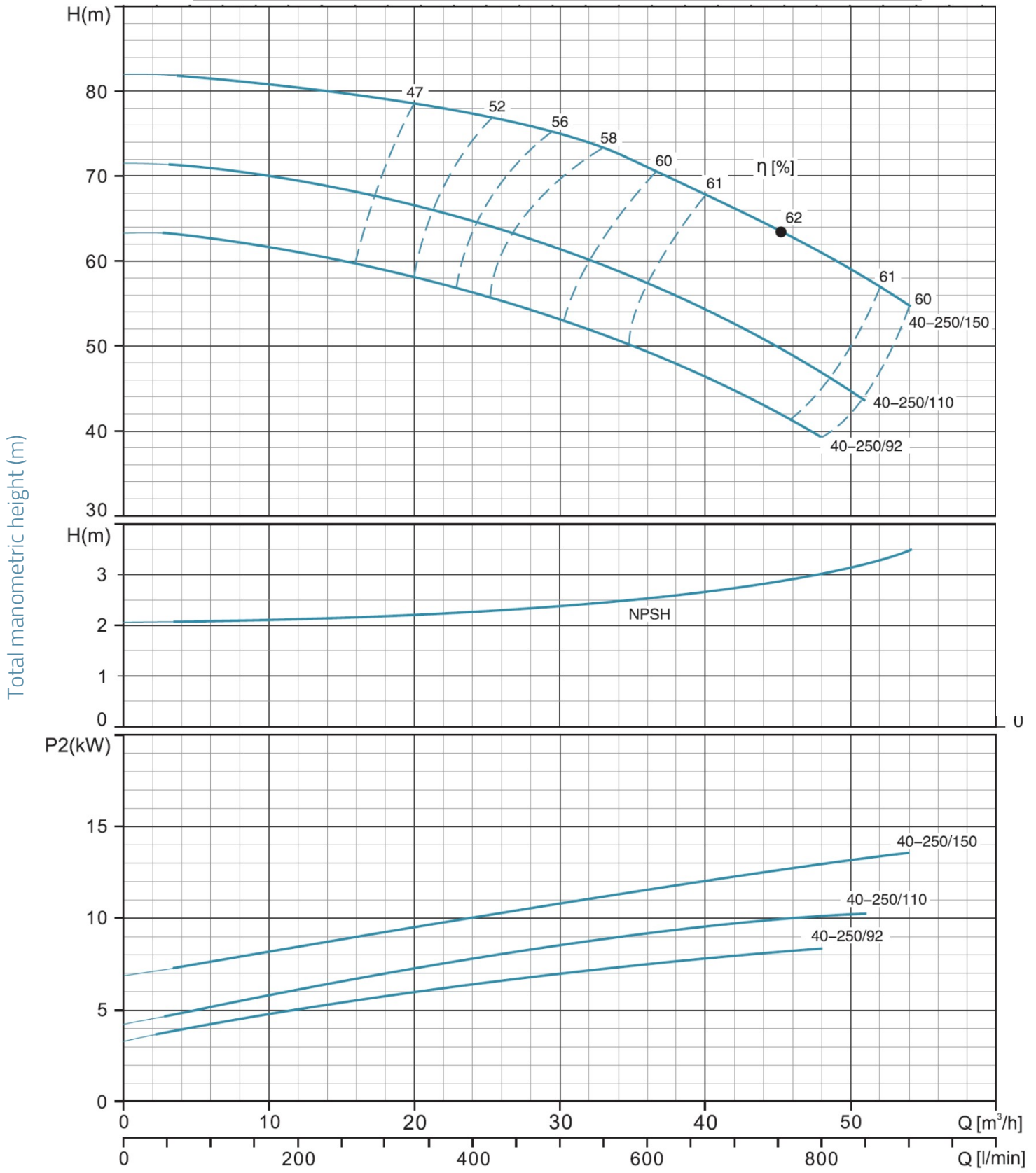
MODEL	DNM	DNA	a	w	x	h2	B1	C	C1	h1	m	m1	n	n1	s	B	H	L	K
XST40-250/92 - 400v	40	65	100	310	260	225	65	20	20	180	260	210	320	254	14.5	350	440	845	110
XST40-250/92	40	65	100	310	260	225	65	20	20	180	260	210	320	254	14.5	350	440	845	110
XST40-250/110	40	65	100	310	260	225	65	20	20	180	260	210	320	254	14.5	350	440	845	110
XST40-250/150	40	65	100	310	260	225	65	20	20	180	260	210	320	254	14.5	350	440	845	110
XST50-200/92	50	65	100	310	260	200	65	20		160	260	210	320	254	14.5	350	420	845	120
XST50-200/110	50	65	100	310	260	200	65	20		160	260	210	320	254	14.5	350	420	845	120
XST50-250/150	50	65	100	310	260	225	65	20	20	180	260	210	320	254	14.5	350	440	845	110
XST50-250/185	50	65	100	310	260	225	65	20	20	180	304	254	320	254	14.5	350	440	895	110
XST50-250/220	50	65	100	323	275	225	70	25		180	311	241	355	279	14.5	350	455	925	110
XST65-160/92	65	80	100	310	260	200	65	20		160	260	210	320	254	14.5	350	420	845	125
XST65-160/110	65	80	100	310	260	200	65	20		160	260	210	320	254	14.5	350	420	845	125
XST65-160/150	65	80	100	310	260	200	65	20		160	260	210	320	254	14.5	350	420	845	125
XST65-200/150	65	80	100	310	260	225	65	20	20	180	260	210	320	254	14.5	350	440	845	125
XST65-200/185	65	80	100	310	260	225	65	20	20	180	304	254	320	254	14.5	350	440	895	125
XST65-200/220	65	80	100	323	275	225	70	22		180	311	241	355	279	14.5	355	455	925	125
XST65-200K/185	65	80	100	337	260	225	65	20	20	180	304	254	320	254	14.5	355	440	920	125
XST65-200K/220	65	80	100	350	275	233	70	22		180	311	241	355	279	14.5	355	455	950	125
XST65-200K/300	65	80	100	362	305	225	70	25		180	369	305	395	318	18.5	355	505	1020	125
XST65-250/220	65	80	100	353	275	250	70	22		180	311	241	355	279	14.5	355	455	956	125
XST65-250/300	65	80	100	365	305	250	70	25		200	369	305	395	318	18.5	400	505	1026	125
XST65-250/370	65	80	100	365	305	250	70	25		200	369	305	395	318	18.5	400	505	1026	125
XST80-160/110	80	100	125	315	260	225	65	20		160	260	210	320	254	14.5	350	420	870	130
XST80-160/150	80	100	125	315	260	225	65	20		160	260	210	320	254	14.5	350	420	870	130
XST80-160/185	80	100	125	315	260	225	65	20		160	304	254	320	254	14.5	350	420	926	130
XST80-200/220	80	100	125	352	275	250	70	22		180	311	241	355	279	14.5	355	461	978	130
XST80-200/300	80	100	125	365	305	250	70	25		200	369	305	395	318	18.5	400	505	1050	130
XST80-250/370	80	100	125	365	305	280	70	25		200	369	305	395	318	18.5	400	508	1050	130
XST80-250/450	80	100	125	381	330	280	75	28		225	404	311	435	356	18.5	450	555	1098	120
XST80-250/550	80	100	125	433	365	280	80	30	30	280	450	349	490	406	24	550	646	1192	120

Exploded view

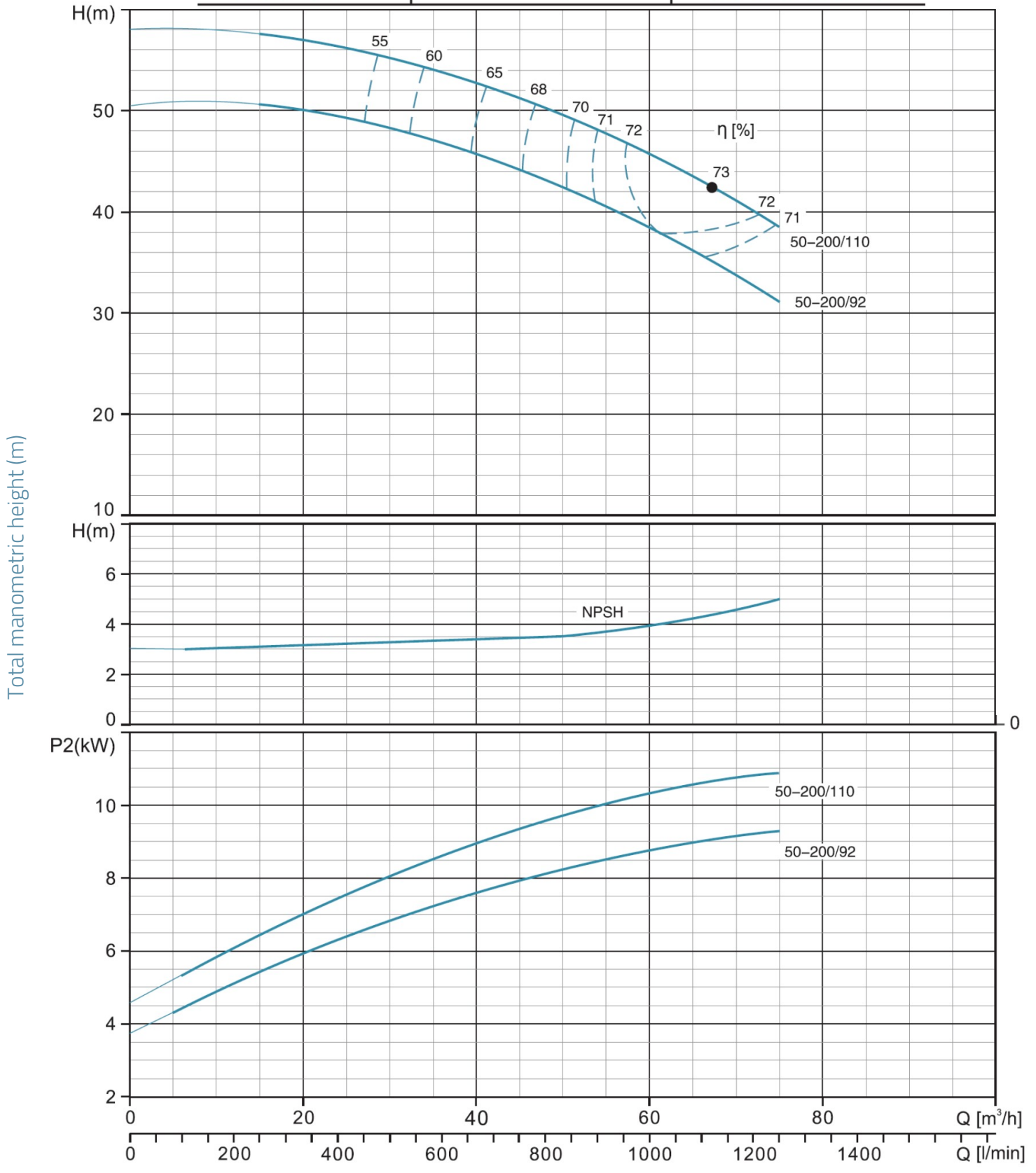
No.	Type	Materials
1	Backing flange	cast iron HT200
2	Pump body	cast iron HT200
3	O-ring	nitrile rubber (NBR)
4	Impeller	stainless steel AISI 304 / cast iron HT200
5	Mechanical seal	silicon carbide / graphite
6	Coupling protection housing	austenitic stainless steel
7	Pump bottom	cast iron HT200
8	Coupling sleeve	austenitic stainless steel
9	Engine	



XST40-250 ~2900rpm ISO 9906 Annex A

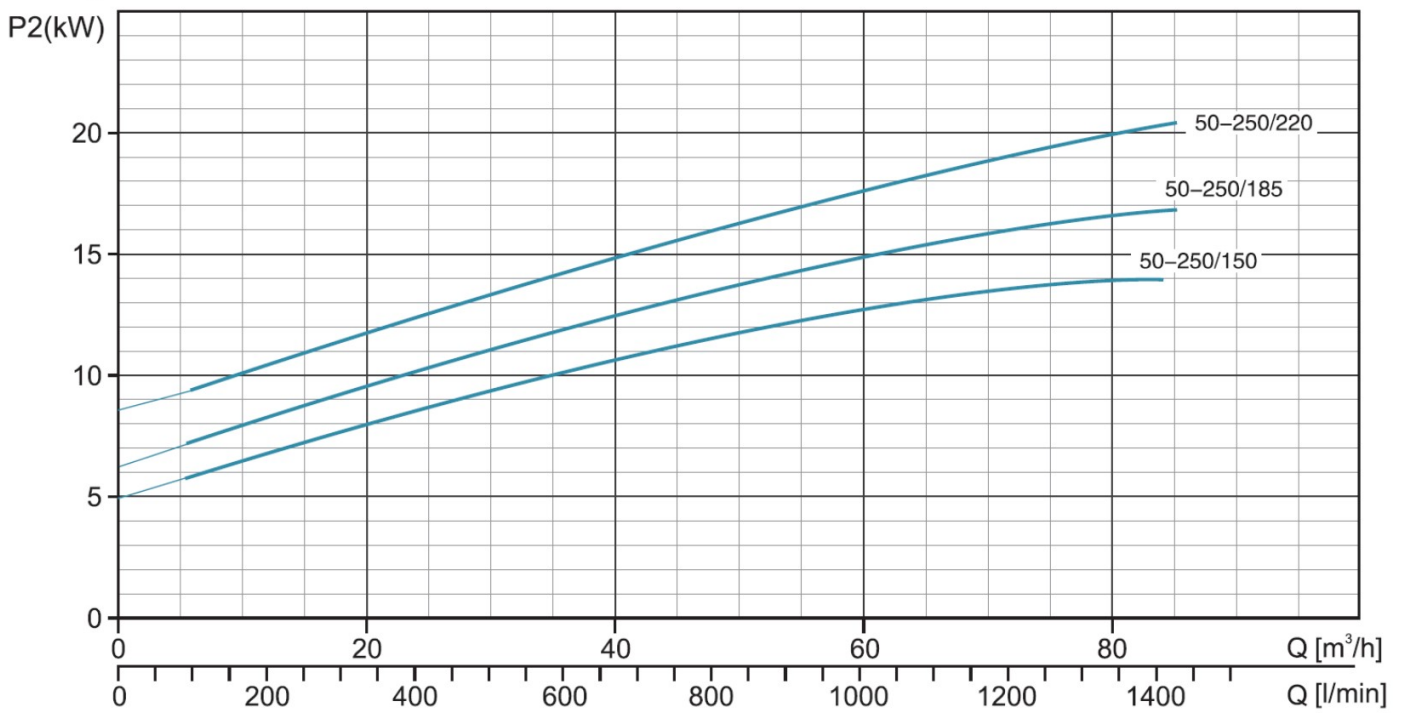
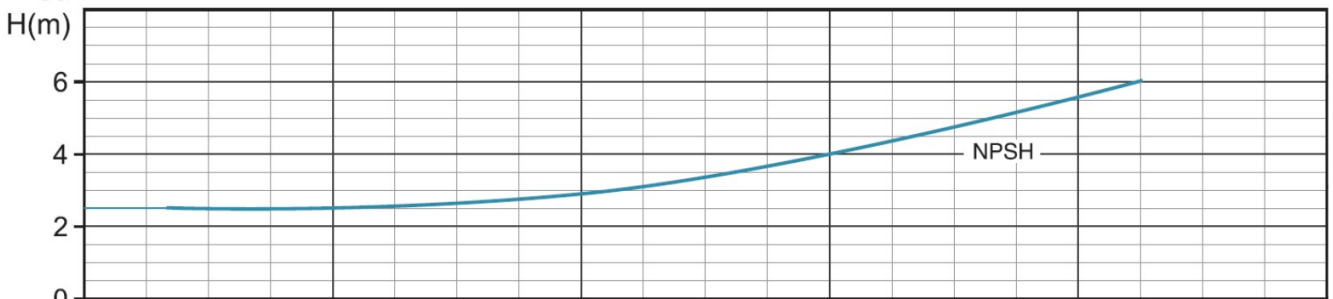
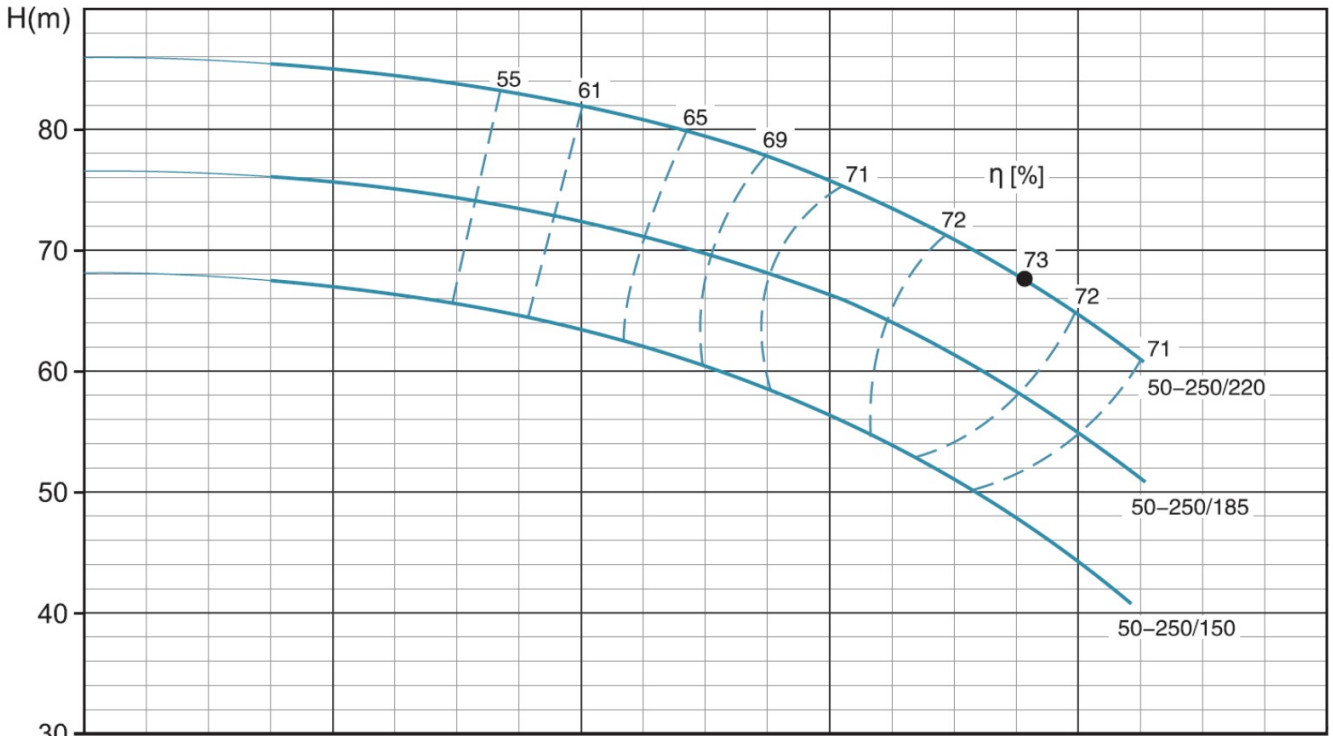


XST50-200 ~2900rpm ISO 9906 Annex A

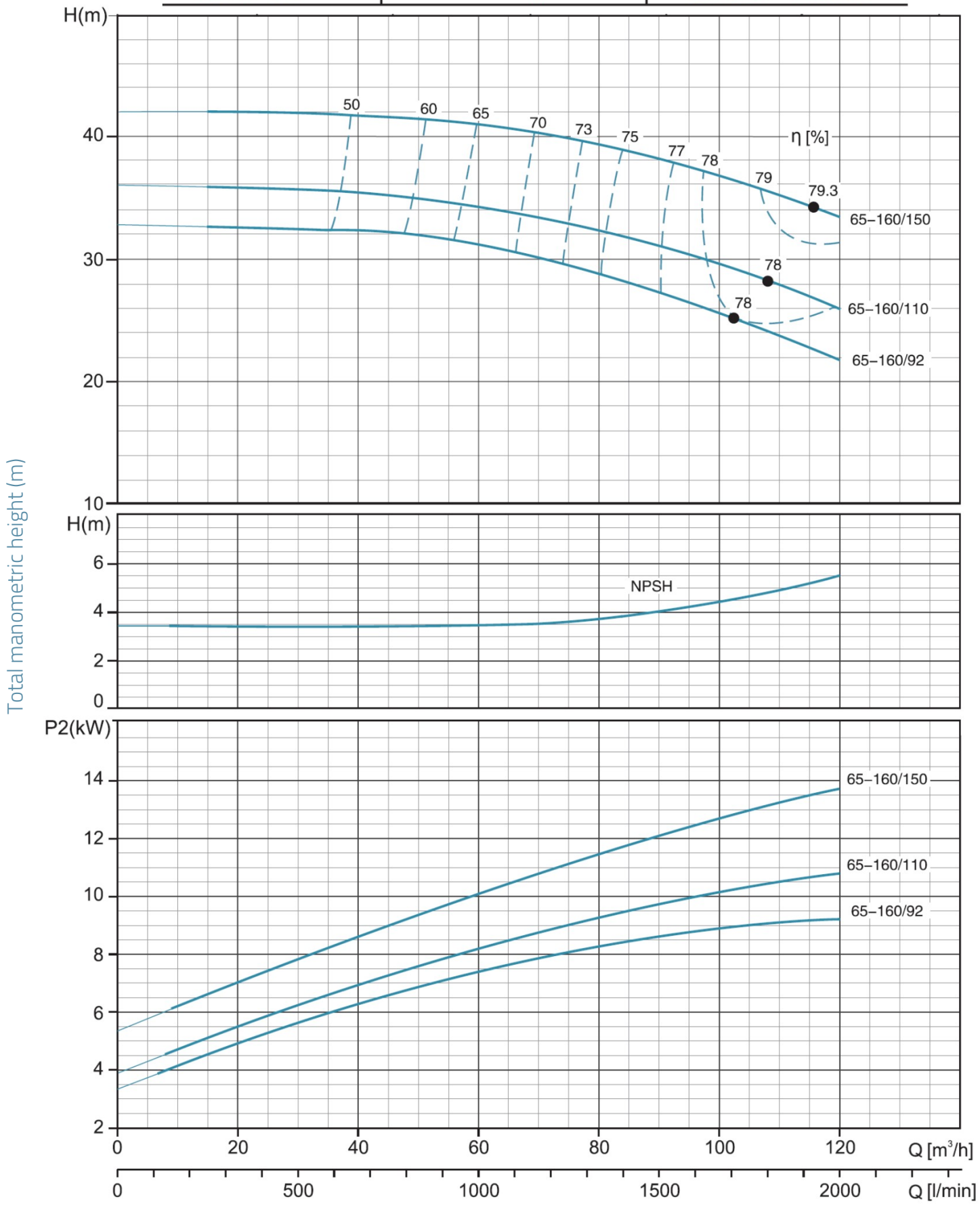


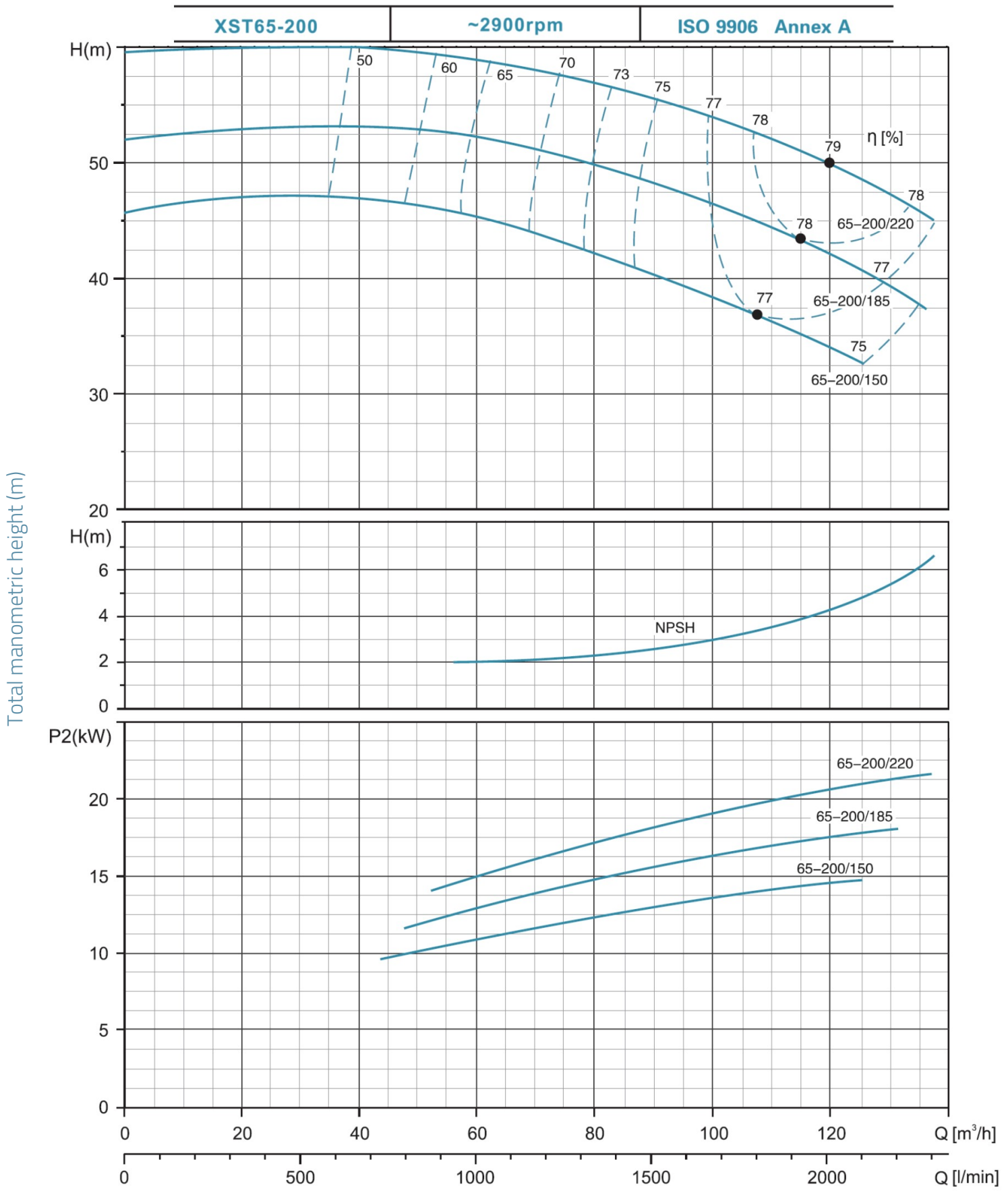
XST50-250 ~2900rpm ISO 9906 Annex A

Total manometric height (m)



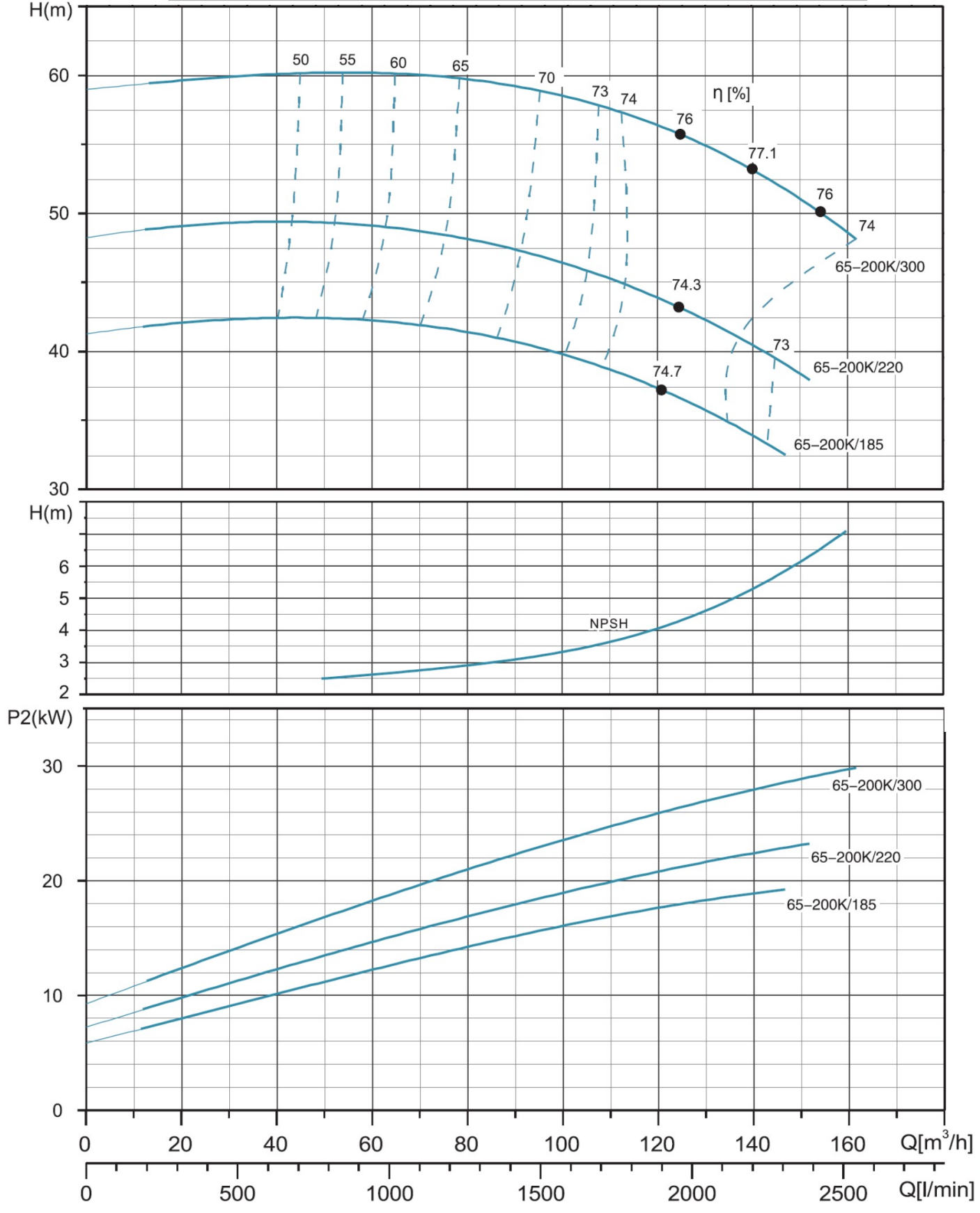
XST65-160 **~2900rpm** **ISO 9906 Annex A**

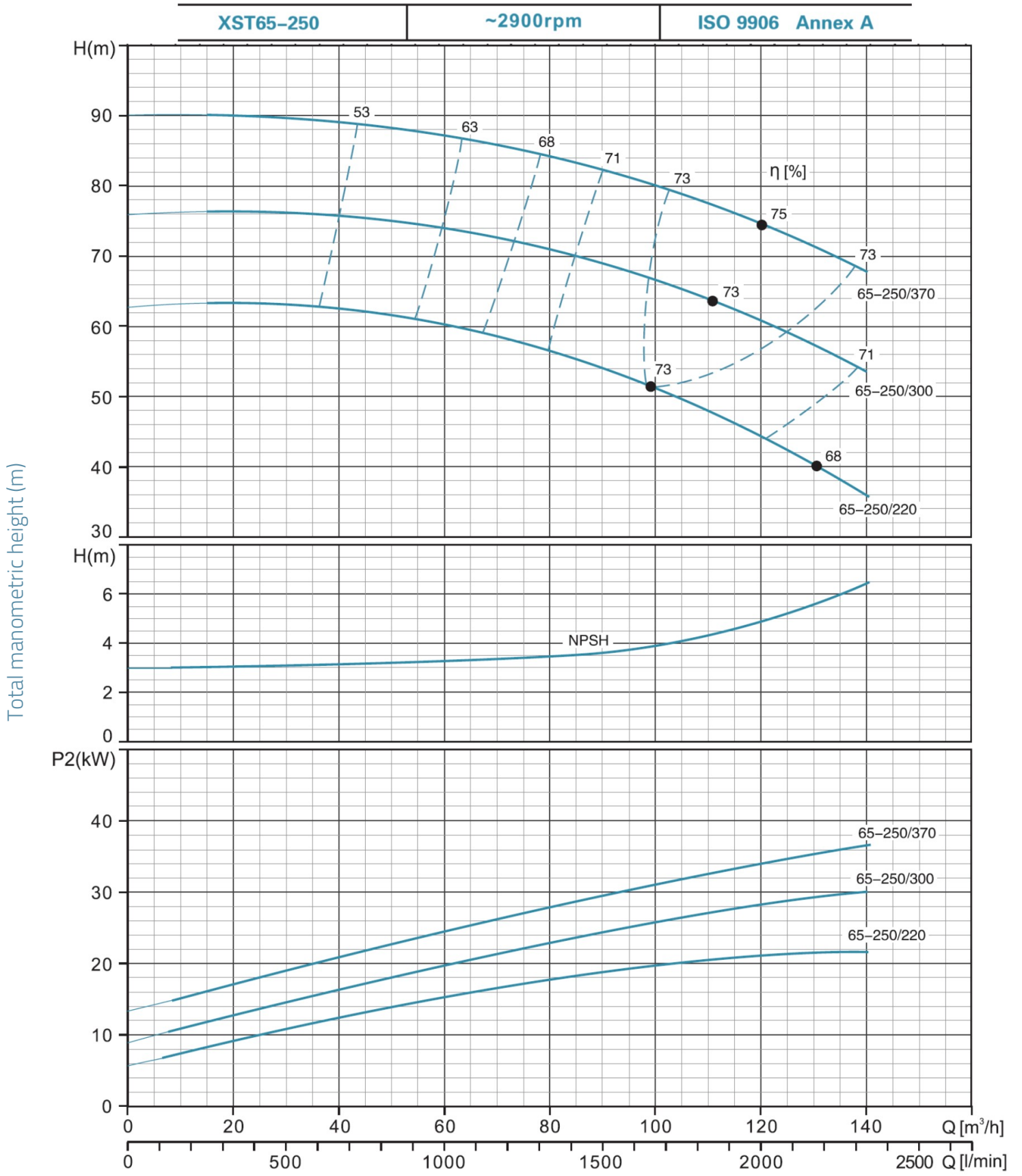




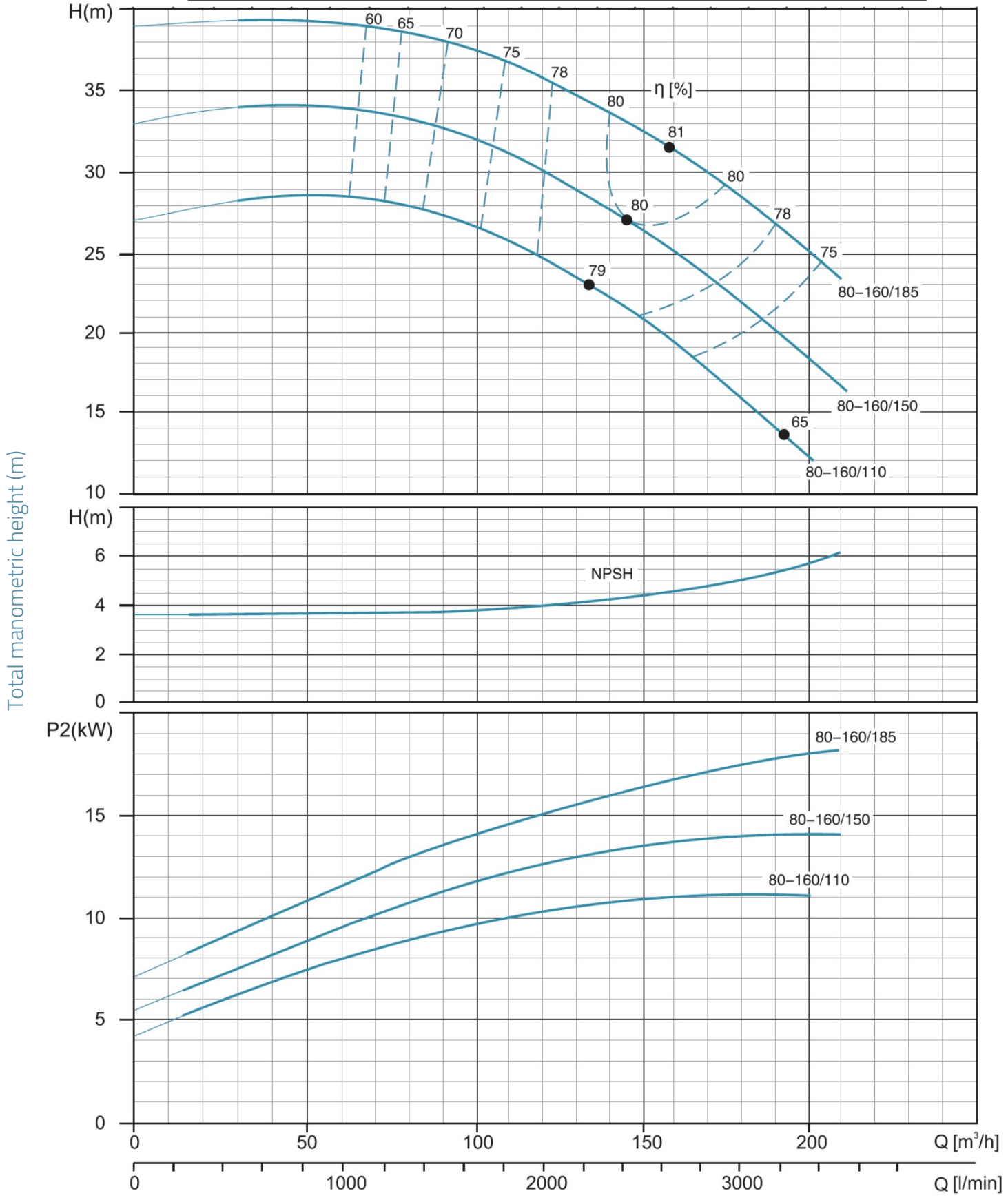
XST65-200K ~2900rpm ISO 9906 Annex A

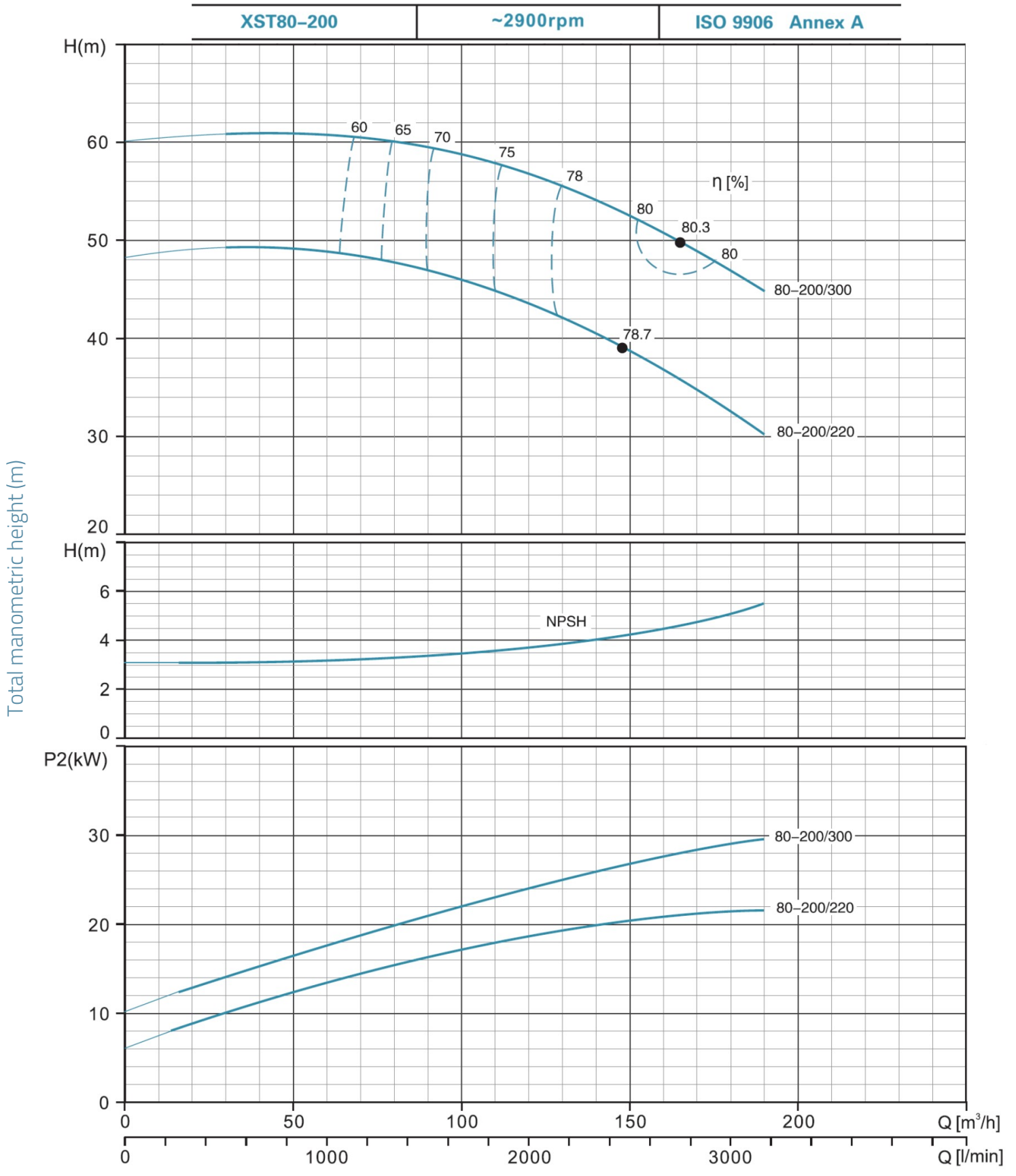
Total manometric height (m)





XST80-160 ~2900rpm ISO 9906 Annex A





XST80-250 ~2900rpm ISO 9906 Annex A

